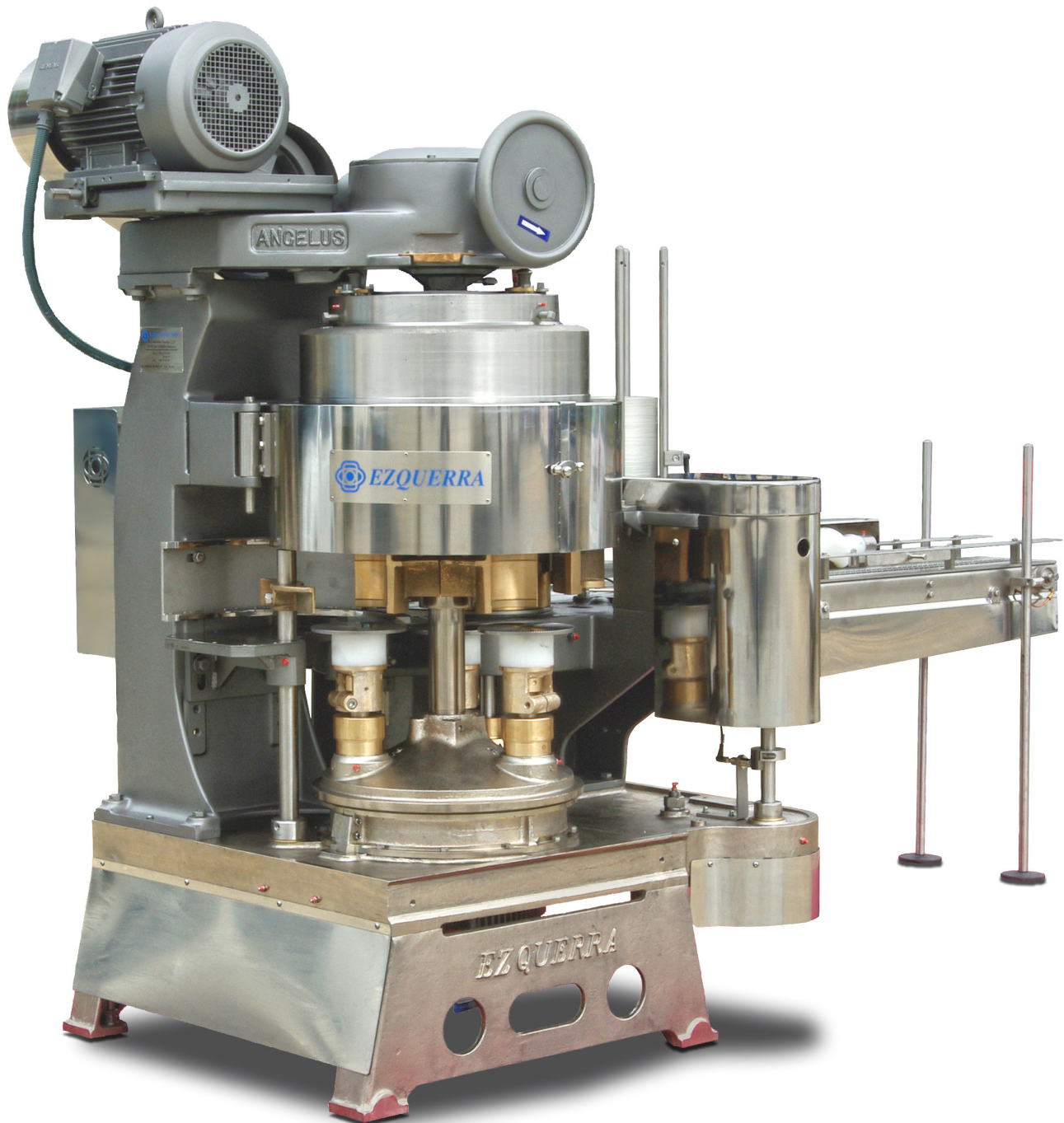


ANGELUS 59P

CATÁLOGO REPUESTO



GRUPO	PÁGINA
59PB001.04.....	3
59PB002.04.....	4
50PB003.03.....	6
59PB003.03-A.....	7
59PB004.03.....	9
50PB005.03.....	10
59PB005.01.....	11
59PB006.03.....	13
59PB007.01.....	16
59PB008.03.....	17
59PB009.....	19
59P-C2.....	20
59PD005.02.....	21
59PD043.....	22
50PD080.....	23
50PD107.....	24
50PD117.....	25
69PD058.....	26



029P243T INOX

Pata cerradora
INOX 316

Base leg SS 316



029P243T

Pata cerradora
fundición

Base leg SS casting



016P543AT INOX

Base principal
INOX 316

Bed plate SS 316



064P216T

Rodamiento

Roller bearing



004P217T

Grupilla

Retaining ring



115P243T

Casquillo para retén

Top plate bushing



003P543T

Mesa salida envases

Discharge table



009P543T

Soporte mesa

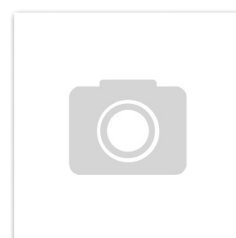
Cap guide bracket



011P543AT

Soporte alimentador
tapas

Cap feed support



041P543T

Mesa soporte
arrastrador

Feed frame



001P508T

Soporte estrella central
Starwheel hub



001P508TI 316

Soporte estrella central
INOX 316
Starwheel hub SS 316



002P541BT

Soporte inferior
cabezal cierre
Lower turret



002P541BT INOX

Soporte inferior
cabezal cierre INOX
316
Lower turret SS 316



008P206BT

Camisa bronce
pistones
Lower turret bushing



005P541AT INOX

Torreta superior
soporte cabezales
INOX 316
Upper turret SS 316



015P544AT NQ

Eje cabezal central
con níquel químico
Turret hollow shaft
with microplated
nickel



013P202T

Soporte rodamiento
Lower bearing retainer
for turret



014P216T

Arandela axial para
piñón
Thrust washer



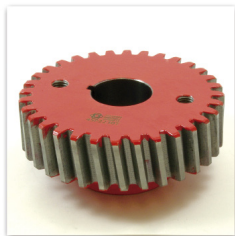
017P216T

Rodamiento axial
Ball thrust bearing



038P216T

Chaveta
Key for turret gear



045P223BT

Piñón
Center lower drive
gear



012P423T COM

Piñón con corona
ref. 013P423T
Intermediate gear with
main intermediate
pinion ref. 013P423T



001P527T

Eje pistón
Lower chuck mandrel



003P229AT

Rueda pistón grande
bronce especial
Cam roll in special
bronze



008P229BT

Bulon rueda pistón
Cam roll pin



006P206AT

Pistón bronce
Lower chuck slide



001P210T

Chaveta pistón INOX
Lower chuck slide key



001P540T

Muelle presión pistón
Lower chuck spring



023P228T

Pasador pistón
Lower chuck lock pin



003P528T
Bulon pistón
 Lower chuck spacer



002P528T
Bulon ajuste muelle presión pistón
 Spring adjusting pin



004P557T
Cacerola pistón
 Lower chuck mandrel cup



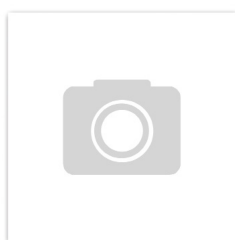
007P228T
Tuerca almenada pistón
 Check nut



001P254T
Espiga allen pistón INOX
 Hex socket set screw SS



001P957T
Tuerca bronce presión plato
 Lower chuck adjusting nut



003P464T
Eje con anillo ref. 004P253T y grupilla 024P417T
 Intermediate gear Stud w/ 004P253T and 024P417T



073P290T
Arandela INOX
 Washer SS



064P220T
Leva pistones
 Lower chuck cam



071P220T
Chapa para leva pistón
 Plate



066P220T
Contraleva pistones
 Lower chuck cam guide



069P220T
Leva pistones can shop y vapor
 Lower chuck cam can-shop and steam vacuum



053P220T
Contraleva pistones can shop y vapor
 Lower chuck cam guide can-shop and steam vacuum



015P220T

Muelle leva
acompañamiento tapa
Cap centering cam
spring



016P228T

Pivote
Dowel pin



020P228T

Bulón regulación
placa cierre
D.S. Spindle
adjustment screw



001P241BT

Caña soporte
cabezales
D.S. Head sleeve



021P241BT

Muelle palanca cierre
D.S. Head spring



022P241T

Tornillo sujeción leva
cierre
Setscrew for D.S. cam



030P241AT

Casquillo para eje
placa cierre
Upper turret
adjustment sleeve



017V241AT

Rodamiento
Upper spindle ball
bearing



004P244CT

Eje de placa cierre
Upper chuck spindle



005P244BT

Varilla expulsora con
seta 009P228AT
Knockout rod
w/009P228AT
knockout rod end



049P244T

Seta expulsora
Knockout plate



049P244RT

Seta expulsora
Knockout plate



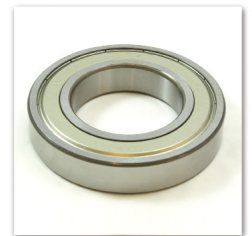
016P544AT

Eje central
Center shaft



002P247T

Chaveta leva cierre
Key for D.S. cam



026P216T

Rodamiento
Ball bearing



028P216T

Rodamiento
Ball bearing



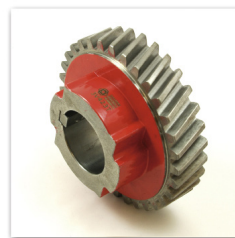
011P820T

Leva cierre
Seaming cam



112P223T

Piñón levas cierre
D.S. Cam drive gear



003V423T

Piñón levas cierre con
chaveta 003P247T
D.S. Head drive gear
w/ 003P247T



604P641T

Tapa rodamiento
cabezal cierre
Lower head bearing



015P220T

Muelle leva
acompañamiento tapa
Cap centering cam
spring



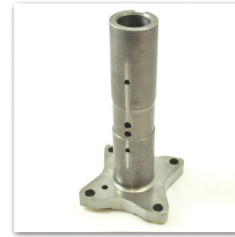
016P228T

Pivote
Dowel pin



020P228T

Bulon regulación
placa cierre
D.S. Spindle
adjustment screw



001P241BT

Caña soporte
cabezales
D.S. Head sleeve



021P241BT

Muelle palanca cierre
D.S. Head spring



022P241T

Tornillo sujeción leva
cierre
Setscrew for D.S. cam



030P241AT

Casquillo para eje
placa cierre
Upper turret
adjustment sleeve



017V241AT

Rodamiento
Upper spindle ball
bearing



004P244CT

Eje de placa cierre
Upper chuck spindle



005P244BT

Varilla expulsora con
seta 009P228AT
Knockout rod
w/009P228AT
knockout rod end



049P244T

Seta expulsora
Knockout plate



049P244RT

Seta expulsora
Knockout plate



016P544AT

Eje central
Center shaft



002P247T

Chaveta leva cierre
Key for D.S. cam



013P216T

Arandela apoyo
Thrust washer



017P220T

Leva cierre
D.S. Cam



089P223DT

Piñón leva cierre
D.S. Head drive gear



090P223T

Piñón leva cierre
D.S. Cam drive gear



035P523T

Piñón
D.S. Center gear



018V241AT

Rodamiento
Lower head bearing



055P516T
Casquillo
Spacer



039P220T
Patín expulsor
Cap centering cam



019P228T
Bulón patín expulsor
Cap centering cam
stud



010P243T
Patín expulsor vapor
Cap centering cam
steam vacuum



013P223BT

Moyú bronce para
piñón

Feed turret gear hub



001P523T

Piñón

Feed turret gear



016P523T

Cubo bronce
portadados

Internal feed gear



006P562T

Arandela cubo bronce
portadados

Liner



017P523T

Piñón movimiento
cubo portadados

Drive gear for feed
arms



023P226T

Tornillo eje bridas

Cap screw for feed
turret shaft



042P543T

Chapa apoyo cubo
portadados

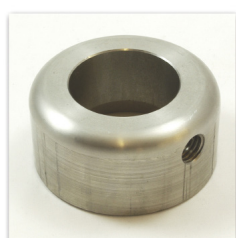
Plate for feed frame



078P544T

Eje bridas vapor

Steam vacuum feed
turret shaft



001P253T

Anillo

Set collar



006P253T

Anillo

Collar



007P562T

Arandela excéntrica
cubo portadados

Eccentric for feed arm



018P263AT

Dado

Feed arm slide



010/014P563T

Excéntricas bronce (5)

Feed arm assembly (5)



015P563T

Arandela sujección
excéntricas bronce

Feed turret washer



003P030T
Mangón de polea
Clutch sleeve



004P030T
Tuerca Embrague
Clutch collar



006P030T
Pivote embrague
Locking pin



007P030T
Arandela embrague
Clutch sleeve washer



008P030T
Cono embrague
Clutch cone



038P030T
Muelle pivote
embrague
Clutch locking pin
spring



007P430T
Patillas embrague
Disc clutch finger



011L630T
Bola
Clutch handle ball



001P240T
Muelle expulsor
Knockout rod spring



027P243T
Soporte palanca
marcha
Starter bracket



018P244T
Eje palanca marcha
Starter shaft



004P246T
Palanca marcha
Starting lever



007P246T
Herradura embrague
Yoke for clutch cone



013P446T
Soporte ferodo freno
embrague
Brake lever



035L617T
Grupilla
Retaining ring



009P917T
Grupilla
Retaining ring



004P253T
Casquillo INOX
Plain collar SS



009P520I

Leva uñas
acompañamiento
tapas

Cap pusher cam



003P523T

Piñón

Cap feed drive gear



005P523T

Piñón

Cap feed intermediate
gear



009L626T

Tornillo

Door latch screw



015L628T

Bulón puertas

Door hinge & latch
pin



001P440T

Muelle bulón puertas

Door latch spring



019P544AT

Eje

Lower cap feed shaft



020P544T

Eje

Cap feed shaft upper



003P253T

Anillo para eje

Collar



001P653T

Casquillo

NC NC feel lever
collar



003P256T

Chapa soporte reglas

Cap feed slide plate



010P256T

Casquillo

Spacing collar



011P256T

Varilla deposito
alimentación tapas

Cap magazine post



012P256T

Bulón alimentador
tapas

Bolt for slide



013P256T

Bulón alimentador
tapas

Bolt for crank



001P556T

Soporte reglas
alimentación tapas

Cap feed slide



003P556T

Biela alimentador
tapas

Cap feed crank



005P559TCOM

Freno tapas bronce
COMPLETO

Cap guide pressure
shoe COMPLETE



006P559TCOM

Freno tapas bronce
COMPLETO

Cap guide pressure
shoe COMPLETE



009P264T

Eje

Gear stud



008P266AT

Uña gatillo disparo tapas

NC NC Pawl



010P266T

Muelle

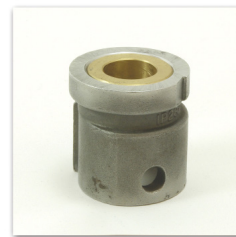
Drive pawl spring



011P266T

Bulón gatillo disparo tapas

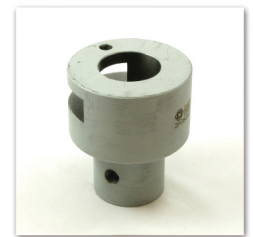
Dive pawl pin



001P282T

Leva gatillo disparo tapas

NC NC Drive Bushing



002P282AT

Soporte gatillo disparo tapas

NC NC Drive hub



004P282BT

Gatillo bronce disparo tapas

NC NC Trip knee



010P282T

Muelle gatillo bronce disparo tapas

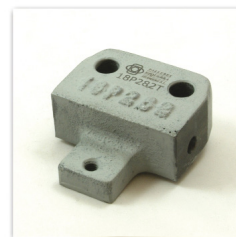
Spring for trip knee



013P282T

Bulón para rótula

Clevis pin



018P282T

Soporte uña disparo tapas

Trip Knee bracket



005P582T

Señal disparo tapas bronce

NC NC Feel lever



009P582T

Varilla señal disparo tapas

NC NC Trip knee connecting rod



011P582T

Varilla regulación disparo tapas

NC NC Connecting rod



005P682T

Señal varilla disparo tapas INOX

NC NC Trip lever



011P682T

Bulón

Pin



014P682T

Biela varilla señal tapas

NC NC connecting rod trip lever



002P556T

Biela bronce alimentador tapas

Cap feed link



004P556T COM

Regla alimentación tapas COMPLETA

Parting knife LH COMPLETE



005P556T COM

Regla alimentación tapas COMPLETA

Parting knife RH COMPLETE



006P556T

Empujador tapas

Center pusher



009P5201
Leva uñas
acompañamiento
tapas
Cap pusher cam



003P523T
Piñón
Cap feed drive gear



005P523T
Piñón
Cap feed intermediate
gear



009L626T
Tornillo
Door latch screw



015L628T
Bulón puertas
Door hinge & latch
pin



001P440T
Muelle bulón puertas
Door latch spring



019P544AT
Eje
Lower cap feed shaft



020P544T
Eje
Cap feed shaft upper



003P253T
Anillo para eje
Collar



001P653T
Casquillo
NC NC feel lever
collar



003P256T
Chapa soporte reglas
Cap feed slide plate



010P256T
Casquillo
Spacing collar



011P256T
Varilla deposito
alimentación tapas
Cap magazine post



012P256T
Bulón alimentador
tapas
Bolt for slide



013P256T
Bulón alimentador
tapas
Bolt for crank



001P556T
Soporte reglas
alimentación tapas
Cap feed slide



003P556T
Biela alimentador
tapas
Cap feed crank



005P559TCOM
Freno tapas bronce
COMPLETO
Cap guide pressure
shoe COMPLETE



006P559TCOM
Freno tapas bronce
COMPLETO
Cap guide pressure
shoe COMPLETE



009P264T
Eje
Gear stud



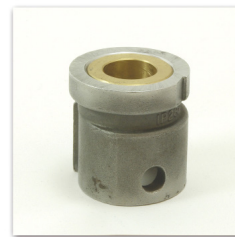
008P266AT
Uña gatillo disparo tapas
NC NC Pawl



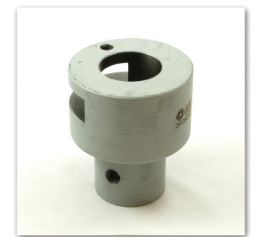
010P266T
Muelle
Drive pawl spring



011P266T
Bulón gatillo disparo tapas
Dive pawl pin



001P282T
Leva gatillo disparo tapas
NC NC Drive Bushing



002P282AT
Soporte gatillo disparo tapas
NC NC Drive hub



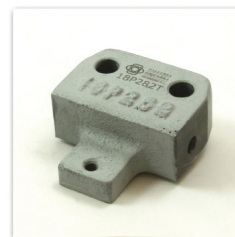
004P282BT
Gatillo bronce disparo tapas
NC NC Trip knee



010P282T
Muelle gatillo bronce disparo tapas
Spring for trip knee



013P282T
Bulón para rótula
Clevis pin



018P282T
Soporte uña disparo tapas
Trip Knee bracket



005P582T
Señal disparo tapas bronce
NC NC Feel lever



009P582T
Varilla señal disparo tapas
NC NC Trip knee connecting rod



011P582T
Varilla regulación disparo tapas
NC NC Connecting rod



101P556T
Cuña alimentador tapas
Cap magazine block



089P556T COM
Regla alimentación tapas marcador rotativo COMPLETA
Parting knife LH rotary marker COMPLETE



090P556T COM
Regla alimentación tapas marcador rotativo COMPLETA
Parting knife RH rotary marker COMPLETE



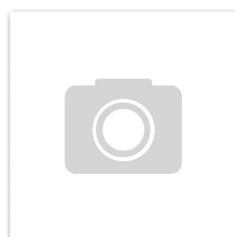
009L653T
Casquillo
Cap feed set collar



099P556T
Empujador tapas marcador rotativo
Center pusher rotary marker



011P682T
Bulón
Pin



008P582T
Eje
Shaft



005P682T
Señal varilla disparo tapas INOX
NC NC Trip lever



076P556T

Biela alimentador
tapas marcador
rotativo

Cap feed crank rotary
marker



129P256T

Biela bronce
alimentador tapas

Cap feed link



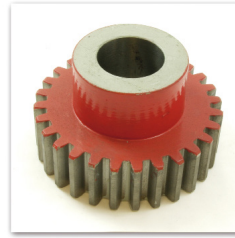
020P264T COM
 Conjunto eje + anillo
 + arandela + tornillo
 Kit shaft + collar +
 washer + screw



019P216T
 Arandela
 Thrust washer



033P523T
 Piñón marcador
 rotativo
 Marker drive gear



034P523T
 Piñón marcador
 rotativo
 Marker drive gear



005P253T
 Anillo
 Collar



009L653T
 Casquillo
 Cap feed set collar



006P253T
 Anillo
 Collar



019P216T

Arandela
Thrust washer



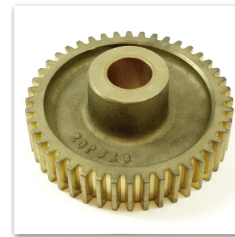
003P526T

Tornillo ajuste mesa
Adjusting screw



022P616T

Arandela
Feed chain idler gear
retaining washer



020P523T

Piñón porta-seguro
arrastrador
Feed chain drive gear



074P623T

Piñón cónico
movimiento
arrastrador
Feed chain drive
bevel pinion



021P523T

Piñón arrastrador
Feed chain drive gear



022P523T

Piñón arrastrador
Feed chain idler gear



079P623T

Piñón cónico
movimiento
arrastrador
Feed turret shaft bevel
gear



001P524T

Piñón INOX cadena
arrastre envases
Feed chain drive
sprocket SS



004P624T

Piñón arrastrador
Feed chain idler
sprocket



011P624T

Piñón arrastrador
Take-up sprocket



042P544T

Eje arrastrador
Feed drive shaft



002P581T

Guitarra arrastrador
Feed chain idler gear
bracket



014P681T

Pie apoyo arrastrador
entrada envases
Feed table elevator
pedestal



015P681T

Tuerca bronce eje pie
entrada envases
Feed table elevator
shaft nut



013P724T

Brida para seguro
arrastrador
Conveyor drive hub



024P741T

Casquillo bronce
piñón arrastrador
Bushing for idler
sprocket



091P669T

Guía envases
izquierda INOX con
alojamiento señal tapa
Inlet rail left SS



090P669T

Guía envases derecha
INOX
Inlet rail right SS



018L626T

Tornillo
Screw



59P-002

Cadena arrastre
envases con 11 dedos
arrastre

Can feed chain with
11 dogs chain



005P624T

Piñón cadena
arrastrador entrada
envases

Feed chain driven
sprocket



004P581T

Guía deslizamiento
cadena arrastre
envases

Feed chain wear strip



007P581T

Chapa entrada envases
Feed table plate



002P626T

Eje para piñón cadena
toma fuerza

Filler drive take up
stud



019L617T

Grupilla

Retaining ring



013P276T

Tornillo

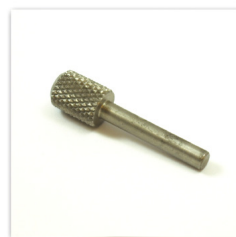
Timer drive gear cap
screw



007P724AT

Casquillo para seguro
arrastrador

Conveyor sprocket
bushing



004P428T

Seguro arrastrador

Shear pin



007P644T

Eje soporte chapa
entrada envases

Feed table support pin



057P644T

Eje arrastrador
Conveyor shaft



002P523T

Piñón salida envases
Discharge gear



004P544T

Eje salida envases
Discharge shaft



002P253T

Casquillo tope
Set collar



015P228T

Tornillo tiralatas
Discharge lever clamp
pin



001P545T

Tiralatas bronce
Discharge lever
bronze



022P243T

Tapa carter superior
Top plate cover



044P243T

Tapa expulsor INOX
Cover for DS spindle
SS



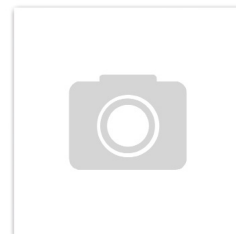
045P243T

Arandela
Upper turret cover



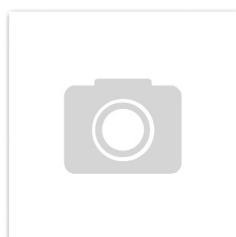
124P244AT

Bulón puerta móvil
Head guard & timing
pin



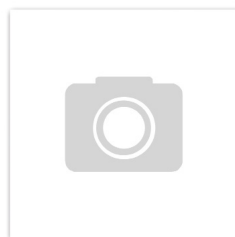
007P544T

Soporte puerta fija
Head guard bracket



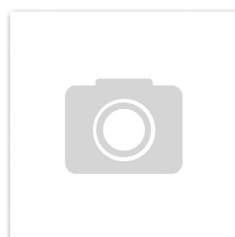
013P544T

Puerta cabezal
izquierda móvil INOX
Head guard door SS



014P544T

Soporte puertas
Bracket for DS head
guard door



015P544T

Puerta cabezal
derecha fija INOX
Main head guard



010P259AT

Tapa para leva
acompañamiento
tapas
Cover for cap pusher
cam



009P254T

Tapas carter inferior en
fundición
Lower chuck cam
guards in casting



009P254TI

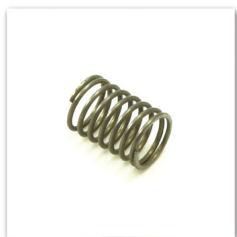
Tapas carter inferior
en INOX 316
Lower chuck cam
guards in SS 316



004P331T

Bulon rueda cierre 1ª
operación

Smg roll pin 1st
operation



006P240T

Muelle

Cover stop spring



005P241T

Bulon rueda cierre 2ª
operación

Compression roll pin
2nd operation



007P241AT

Rodillo leva cierre

Cam roll



015P241T

Excéntrica palanca
cierre

Cam roll eccentric pin



004P541T

Varilla muelle cabezal
1ª operación

Clamping pin 1st
operation



018P241T

Varilla muelle cabezal
2ª operación

Clamping pin 2nd
operation



019P241T

Tope bronce
regulación rueda
cierre

Indicator



020P241T

Bulón fijación rueda
cierre

Clamping pin



01P357T

Platillo asiento envase

Lower chuck plate
cannery



003P559T

Uña arrastre tapa

Cap pusher



010P667T

Bulón uña arrastre
tapa

Cap pusher pin



002P264T

Bulón rueda uña
arrastre tapa

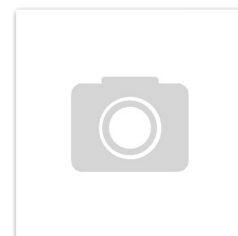
Cap pusher cam roll
pin



003P264T

Rueda uña arrastre
tapa

Cap pusher cam roll



023P185TCOM

Freno salida tapa
COMPLETO

Cap magazine cover
stop COMPLETE



002P615T

Junta tórica brida
bote-tapa vapor

O-Ring



015P520T

Leva uñas
acompañamiento
tapas vapor

Steam vacuum cap
pusher



001P526T

Tornillo fijación tapa
eje vapor

Steam vacuum turret
shaft cap screw



010P528T

Bulón brida bote-tapa
vapor INOX

Steam vacuum valve
ring dive pin SS



034P539T

Anillo colector barrido
vapor

Steam vacuum
manifold ring



035P539T

Zapata entrada vapor
en brida bote-tapa

Steam vacuum feed
pocket shoe



036P539T

Guía anillo colector
vapor

Steam vacuum
manifold ring pilot



037P539T

Anillo válvula de
barrido

Steam vacuum valve
ring



011P640T

Muelle brida
bote-tapa vapor

Steam vacuum feed
pocket spring



086P543T

Mesa guía tapas
vapor con chapas
087/088P543T

Steam vacuum
cap guide disc w/
087/088P543T plates



078P544T

Eje bridas vapor

Steam vacuum feed
turret shaft



001P553T

Separador tornillo
fijación vapor

Steam vacuum cap
screw spacer



042P539T

Bulón entrada vapor

Pipe nipple



087P543T

Chapa exterior mesa
guías vapor INOX

Cap guide disc outer
SS



087P543T

Chapa exterior mesa
guías vapor INOX

Cap guide disc outer
SS



012P297T

Tuerca bronce toma fuerza
Safety clutch locknut



036P297T

Arandela toma fuerza
Steel washer for safety clutch



014P297T

Muelle toma fuerza
Safety clutch spring



008P297T

Soporte fundido toma fuerza
Safety clutch sleeve



003P615T

Aro tórico toma fuerza
O ring



011P297T

Arandela templada toma fuerza
Ball slip disc



035P297T

Bola toma fuerza 7/8"
Safety clutch ball 7/8"



010P297T

Arandela templada toma fuerza
Ball retaining disc



009P297T

Soporte fundido toma fuerza
Safety Clutch Housing



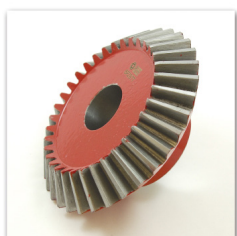
013P297T

Corona dentada toma fuerza
Safety clutch sprocket



004P253T

Casquillo INOX
Plain collar SS



006P297T

Piñón cónico toma fuerza
Miter gear



006P597T

Soporte toma fuerza
All angle filler drive stud



008P597T

Piñón cónico toma fuerza
Miter gear



007P597T

Piñón toma fuerza
Spec filler drive gear



022P216T

Arandela apoyo
Thrust washer



012L643T

Guías mesa motor
Motor base guide



221P443T

Base motor
ref. 031P443T
Motor base
ref. 031P443T



015L626T

Tuerca bronce soporte
motor
Motor base screw
block



061P543T

Chapa guía soporte
motor
Motor base screw
support



012L653T

Manilla
Crank handle



102P543T

Mesa soporte motor
Motor base bracket



198L653T

Casquillo varilla tensor
motor
Collar



236L616T

Rueda soporte motor
Cap feed crank



014L626T

Eje roscado soporte
motor
Motor base screw



001L617T

Grupilla
Retaining ring



012P297T

Tuerca bronce toma fuerza
Safety clutch locknut



036P297T

Arandela toma fuerza
Steel washer for safety clutch



014P297T

Muelle toma fuerza
Safety clutch spring



008P297T

Soporte fundido toma fuerza
Safety clutch sleeve



003P615T

Aro tórico toma fuerza
O ring



011P297T

Arandela templada toma fuerza
Ball slip disc



035P297T

Bola toma fuerza 7/8"
Safety clutch ball 7/8"



010P297T

Arandela templada toma fuerza
Ball retaining disc



009P297T

Soporte fundido toma fuerza
Safety Clutch Housing



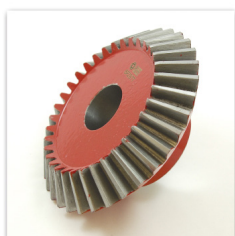
013P297T

Corona dentada toma fuerza
Safety clutch sprocket



004P253T

Casquillo INOX
Plain collar SS



006P297T

Piñón cónico toma fuerza
Miter gear



039P030T

Soporte polea
transmisión

Clutch spring hub



124P030T

Polea embrague

Clutch pulley



002P626T

Eje piñón cadena toma fuerza

Filler drive take-up stud



010P624T

Piñón cadena toma fuerza

Filler drive take-up sprocket



019L617T

Grupilla

Retaining ring