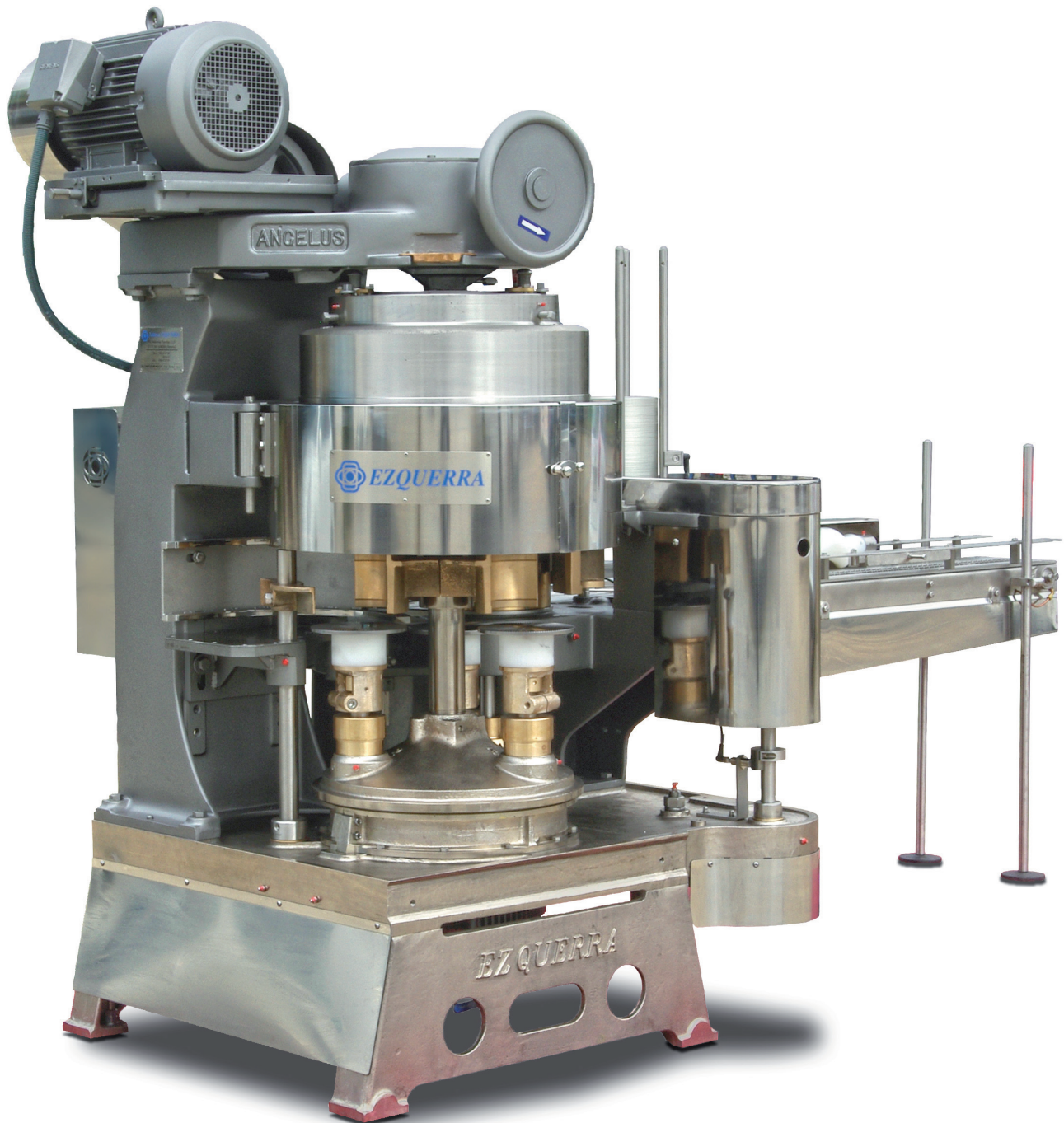
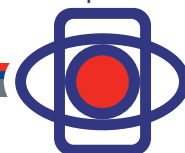


# ANGELUS 58P

## CATÁLOGO REPUESTO



Grupo  
Ezquerra



Ezquerra  
Industria Ezquerra Somme, s.l.

Somme®  
SOMMETRAD, S.L.

COMERCIAL  
Somme, s.l.

López Galicia  
Cerradoras López Galicia, s.l.

Somme®  
MAROC, S.A.R.L.

GRUPO	PÁGINA
53PB001.05.....	3
53PB002.02.....	4
53PB002.02-A.....	6
58PB004.01.....	7
53PB005.03.....	8
53PB014.01.....	9
53PB006.01.....	10
53PB008.....	12
58PB010.06.....	13
53PB011.02.....	15
53PB012.01.....	16
58PC .....	17
58PD001.02 .....	18
53PD002 .....	19
58PD080 .....	20
50PD043 .....	21
69PD58 .....	22



**029P243T INOX**  
**Pata cerradora**  
**INOX 316**  
 Base leg SS 316



**029P243T**  
**Pata cerradora**  
**fundición**  
 Base leg SS casting



**064P216T**  
**Rodamiento**  
 Roller bearing



**002P523T**  
**Piñón salida envases**  
 Discharge gear



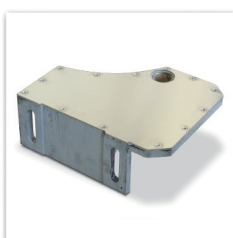
**015P228T**  
**Tornillo tiralatas**  
 Discharge lever clamp  
 pin



**001P545T**  
**Tiralatas bronce**  
 Discharge lever  
 bronze



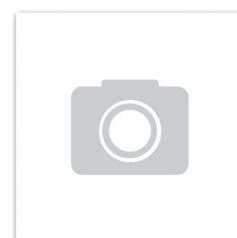
**115P243T**  
**Casquillo para retén**  
 Top plate bushing



**003P543T**  
**Mesa salida envases**  
 Discharge table



**009P543T**  
**Soporte mesa**  
 Cap guide bracket



**041P543T**  
**Mesa soporte**  
**arrastrador**  
 Feed frame



**042P543T**  
**Chapa apoyo cubo**  
**portadados**  
 Plate for feed frame



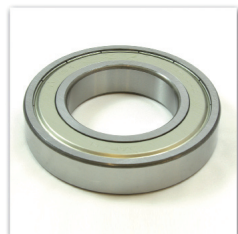
**004P544T**  
**Eje salida envases**  
 Discharge shaft



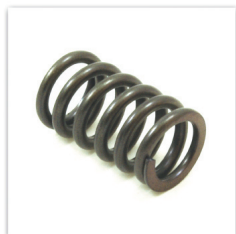
**007P644T**  
**Eje soporte chapa**  
**entrada envases**  
 Feed table support pin



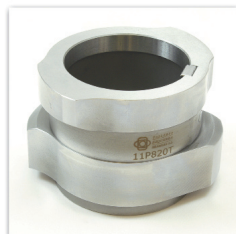
**002P253T**  
**Casquillo tope**  
 Set collar



026P216T  
Rodamiento  
Ball bearing



015P220T  
Muelle patín expulsor  
Cap centering cam spring



011P820T  
Leva cierre  
Seaming cam



112P223T  
Piñón levas cierre  
D.S. Cam drive gear



003V423T  
Piñón levas cierre con  
chaveta 003P247T  
D.S. Head drive gear  
w/ 003P247T



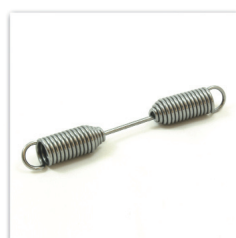
016P228T  
Pivote  
Dowel pin



020P228T  
Bulón regulación  
placa cierre  
D.S. Spindle  
adjustment screw



001P241BT  
Caña soporte  
cabezales  
D.S. Head sleeve



021P241BT  
Muelle palanca cierre  
D.S. Head spring



022P241T  
Tornillo sujeción leva  
cierre  
Setscrew for D.S. cam



030P241AT  
Casquillo para eje  
placa cierre  
Upper turret  
adjustment sleeve



017V241AT  
Rodamiento  
Upper spindle ball  
bearing



604P641T  
Tapa rodamiento  
cabezal cierre  
Lower head bearing



004P244CT  
Eje de placa cierre  
Upper chuck spindle



005P244BT  
Varilla expulsora con  
seta 009P228AT  
Knockout rod  
w/009P228AT  
knockout rod end



049P244T  
Seta expulsora  
Knockout plate



002P247T  
Chaveta leva cierre  
Key for D.S. cam



001P210T  
Chaveta pistón INOX  
Lower chuck slide key



001P527T  
Eje pistón  
Lower chuck mandrel



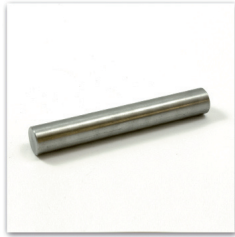
007P228T  
Tuerca almenada  
pistón  
Check nut



023P228T

Pasador pistón

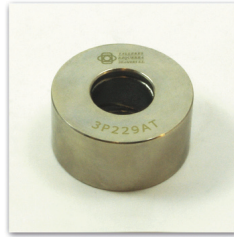
Lower chuck lock pin



002P528T

Bulon ajuste muelle  
presión pistón

Spring adjusting pin



003P229AT

Rueda pistón grande  
bronce especial

Cam roll in special  
bronze



601P629T

Rueda pistón pequeña

Lower chuck return  
cam roll



001P540T

Muelle presión pistón

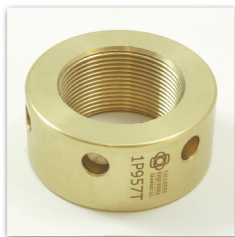
Lower chuck spring



004P557T

Cacerola pistón

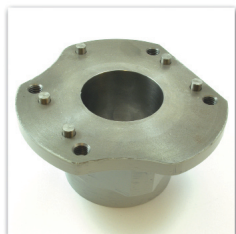
Lower chuck mandrel  
cup



001P957T

Tuerca bronce presión  
plato

Lower chuck adjusting  
nut



001P508T

Soporte estrella central  
Starwheel hub



001P508TI 316

Soporte estrella central  
INOX 316  
Starwheel hub SS 316



016P228T

Pivote  
Dowel pin



028P216T

Rodamiento  
Ball bearing



016P544AT

Eje central  
Center shaft



013P202T

Soporte rodamiento  
Lower bearing retainer  
for turret



014P216T

Arandela axial para  
piñón  
Thrust washer



017P216T

Rodamiento axial  
Ball thrust bearing



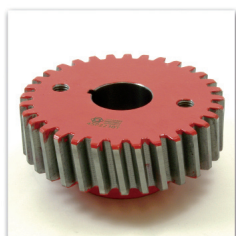
038P216T

Chaveta  
Key for turret gear



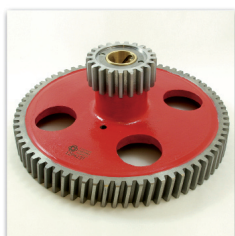
602P616T

Tornillo para piñón  
Tapper set screw



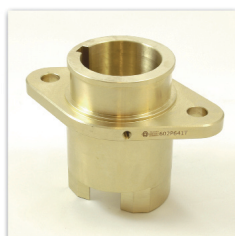
045P223BT

Piñón  
Center lower drive  
gear



012P423T COM

Piñón con corona  
ref. 013P423T  
Intermediate gear with  
main intermediate  
pinion ref. 013P423T



602P641T

Camisa pistón bronce  
Lower turret bushing



023P226T

Tornillo eje bridas  
Cap screw for feed  
turret shaft



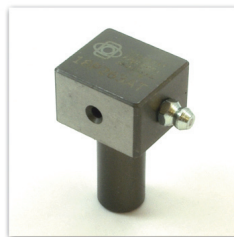
015P563T

Arandela sujeción  
excéntricas bronce  
Feed turret washer



010/014P563T

Excéntricas bronce (5)  
Feed arm assembly (5)



018P263AT

Dado  
Feed arm slide



016P523T

Cubo bronce  
portadados  
Internal feed gear



017P523T

Piñón movimiento  
cubo portadados  
Drive gear for feed  
arms



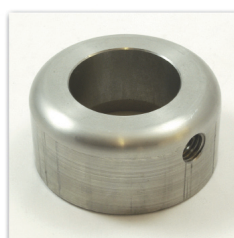
007P562T

Arandela excéntrica  
cubo portadados  
Eccentric for feed arm



006P562T

Arandela cubo bronce  
portadados  
Liner



001P253T

Anillo  
Set collar



013P223BT

Moyú bronce para  
piñón  
Knockout rod



001P523T

Piñón  
Feed turret gear



006P253T

Anillo  
Collar



035L617T

Grupilla

Retaining ring



009P917T

Grupilla

Retaining ring



003P030T

Mangón de polea

Clutch sleeve



004P030T

Tuerca Embrague

Clutch collar



006P030T

Pivote embrague

Locking pin



007P030T

Arandela embrague

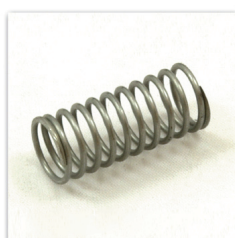
Clutch sleeve washer



008P030T

Cono embrague

Clutch cone



038P030T

Muelle pivote  
embragueClutch locking pin  
spring

007P430T

Patillas embrague

Disc clutch finger



011L630T

Bola

Clutch handle ball



001P240T

Muelle expulsor

Knockout rod spring



027P243T

Soporte palanca  
marcha

Starter bracket



018P244T

Eje palanca marcha

Starter shaft



004P246T

Palanca marcha

Starting lever



007P246T

Herradura embrague

Yoke for clutch cone



013P446T

Soporte ferodo freno  
embrague

Brake lever



004P253T

Casquillo INOX

Plain collar SS





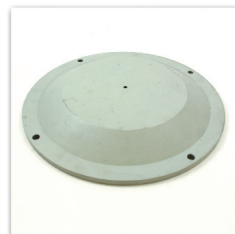
004P253T  
Casquillo INOX  
Plain collar SS



009P917T  
Grupilla  
Retaining ring



035L617T  
Grupilla  
Retaining ring



022P243T  
Tapa carter superior  
Top plate cover



064P216T  
Rodamiento  
Roller bearing



011L630T  
Bola  
Clutch handle ball



115P243T  
Casquillo para retén  
Top plate bushing



004P217T  
Grupilla  
Retaining ring



003P523T

Piñón

Cap feed drive gear



005P523T

Piñón

Cap feed intermediate gear



009L626T

Tornillo

Door latch screw



015L628T

Bulón puertas

Door hinge & latch pin



011P240T

Muelle freno tapas

Cap feed brake spring



001P440T

Muelle bulón puertas

Door latch spring



004P543T

Mesa soporte guías de tapas

Cap guide disc



019P544AT

Eje

Lower cap feed shaft



020P544T

Eje

Cap feed shaft upper



003P253T

Anillo para eje

Collar



009L653T

Casquillo

Cap feed set collar



003P256T

Chapa soporte reglas

Cap feed slide plate



010P256T

Casquillo

Spacing collar



011P256T

Varilla deposito alimentación tapas

Cap magazine post



012P256T

Bulón alimentador tapas

Bolt for slide



013P256T

Bulón alimentador tapas

Bolt for crank



113P256T

Soporte freno tapas

Cap feed brake bracket



114P256T

Soporte freno tapas

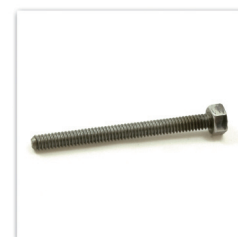
Cap feed brake drum



115P256T

Soporte freno tapas

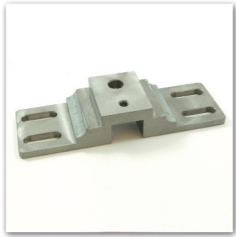
Cap feed brake shoe



116P256T

Bulón muelle freno tapas

Cap feed brake spring screw



**001P556T**  
Soporte reglas  
alimentación tapas  
Cap feed slide



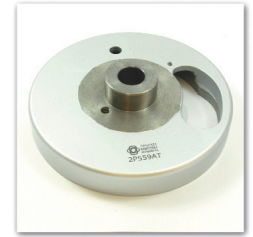
**014P556T**  
Cuchilla regla  
alimentación tapas  
Parting knife blade RH



**015P556T**  
Cuchilla regla  
alimentación tapas  
Parting knife blade LH



**101P556T**  
Cuña alimentador  
tapas  
Cap magazine block



**002P559AT**  
Leva uñas  
acompañamiento  
tapas  
Cap pusher cam



**009P264T**  
Eje  
Gear stud



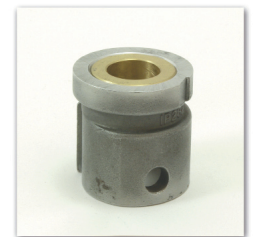
**008P266AT**  
Uña gatillo disparo  
tapas  
NC NC Pawl



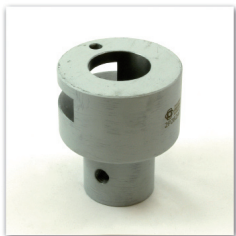
**010P266T**  
Muelle  
Drive pawl spring



**011P266T**  
Bulón gatillo disparo  
tapas  
Drive pawl pin



**001P282T**  
Leva gatillo disparo  
tapas  
NC NC Drive Bushing



**002P282AT**  
Soporte gatillo disparo  
tapas  
NC NC Drive hub



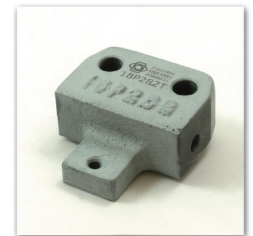
**004P282BT**  
Gatillo bronce disparo  
tapas  
NC NC Trip knee



**010P282T**  
Muelle gatillo bronce  
disparo tapas  
Spring for trip knee



**013P282T**  
Bulón para rótula  
Clevis pin



**018P282T**  
Soporte uña disparo  
tapas  
Trip Knee bracket



**002P582T**  
Varilla regulación  
disparo tapas  
NC NC Connecting  
rod



**004P582T**  
Soporte varilla disparo  
tapas  
NC NC Shaft bracket



**017P582T**  
Varilla soporte  
lanzadera tapas  
NC NC Feel lever shaft



**005P682T**  
Señal varilla disparo  
tapas INOX  
NC NC Trip lever



**019P682T**  
Señal disparo tapas  
NC NC Feel lever



009L653T  
Casquillo  
Cap feed set collar



019P216T  
Arandela  
Thrust washer



005P253T  
Anillo  
Collar



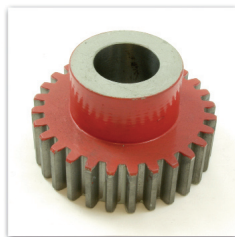
024P226T  
Tornillo sujeción  
piñón marcador  
rotativo  
Cap screw



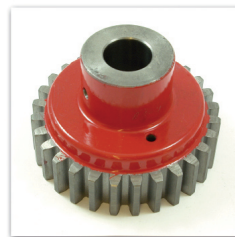
073P290T  
Arandela INOX  
Washer SS



020P264T COM  
Eje COMPLETO y  
MONTADO  
Intermediate gear stud  
COMPLETE



034P523T  
Piñón marcador  
rotativo  
Marker intermediate  
drive gear



033P523T  
Piñón marcador  
rotativo  
Marker drive gear



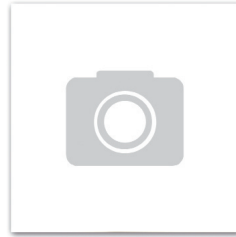
091P669T

Guía envases izquierda INOX con alojamiento señal tapa  
Inlet rail left SS



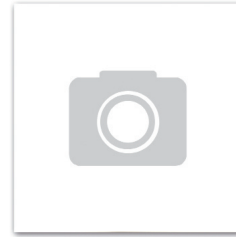
090P669T

Guía envases derecha INOX  
Inlet rail right SS



59P-002

Cadena arrastre envases con 11 dedos arrastre  
Can feed chain with 11 dogs chain



004P581T

Guía deslizamiento cadena arrastre envases  
Feed chain wear strip



005P624T

Piñón cadena arrastrador entrada envases  
Feed chain driven sprocket



011P624T

Piñón arrastrador  
Take-up sprocket



004P624T

Piñón arrastrador  
Feed chain idler sprocket



024P741T

Casquillo bronce piñón arrastrador  
Bushing for idler sprocket



015P681T

Tuerca bronce eje pie entrada envases  
Feed table elevator shaft nut



014P681T

Pie apoyo arrastrador entrada envases  
Feed table elevator pedestal



002P626T

Eje para piñón cadena toma fuerza  
Filler drive take up stud



019L617T

Grupilla  
Retaining ring



019P216T

Arandela  
Thrust washer



003P526T

Tornillo ajuste arrastrador  
Adjusting screw



079P623T

Piñón cónico movimiento arrastrador  
Feed turret shaft bevel gear



074P623T

Piñón cónico movimiento arrastrador  
Feed chain drive bevel pinion



020P523T

Piñón porta-seguro arrastrador  
Feed chain drive gear



007P724AT

Casquillo para seguro arrastrador  
Conveyor sprocket bushing



013P724T

Brida para seguro arrastrador  
Conveyor drive hub



013P276T

Tornillo  
Timer drive gear cap screw



042P544T

Eje arrastrador  
Feed drive shaft



007P581T

Chapa entrada envases  
Feed table plate



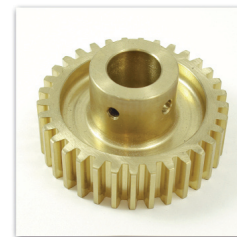
001P524T

Piñón INOX cadena  
arrastre envases  
Feed chain drive  
sprocket SS



002P581T

Guitarra arrastrador  
Feed chain idler gear  
bracket



021P523T

Piñón arrastrador  
Feed chain drive gear



022P523T

Piñón arrastrador  
Feed chain idler gear



022P616T

Arandela  
Feed chain idler gear  
retaining washer



004P428T

Seguro arrastrador  
Shear pin



022P243T

Tapa carter superior  
Top plate cover



044P243T

Tapa expulsor INOX  
Cover for DS spindle  
SS



045P243T

Arandela  
Upper turret cover



124P244AT

Bulón puerta móvil  
Head guard & timing  
pin



009P254T

Tapas carter inferior en  
fundición  
Lower chuck cam  
guards in casting



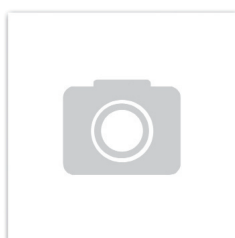
009P254TI

Tapas carter inferior  
en INOX 316  
Lower chuck cam  
guards in SS 316



007P544T

Soporte puerta fija  
Head guard bracket



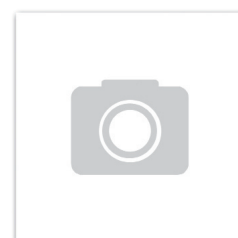
014P544T

Soporte puertas  
Bracket for DS head  
guard door



017P544T

Soporte puerta fija  
Head guard bracket



160P554T

Coraza para piñón  
Intermediate &  
discharge gear guard



042P216T

Soporte galga  
regulacion cierre

Wire feeler gauge  
handle



044P216T

Llave para pistón

Lower chuck nut  
wrench



045P216T

Llave para pistón

Lower chuck spring  
adjustment wrench





**004P331T**  
Bulon rueda cierre 1ª  
operación  
Smg roll pin 1st  
operation



**006P240T**  
Muelle  
Cover stop spring



**005P241T**  
Bulon rueda cierre 2ª  
operación  
Compression roll pin  
2nd operation



**007P241AT**  
Rodillo leva cierre  
Cam roll



**015P241T**  
Excéntrica palanca  
cierre  
Cam roll eccentric pin



**004P541T**  
Varilla muelle cabezal  
1ª operación  
Clamping pin 1st  
operation



**018P241T**  
Varilla muelle cabezal  
2ª operación  
Clamping pin 2nd  
operation



**019P241T**  
Tope bronce  
regulación rueda  
cierre  
Indicator



**020P241T**  
Bulón fijación rueda  
cierre  
Clamping pin



**01P357T**  
Platillo asiento envase  
Lower chuck plate  
cannery



**003P559T**  
Uña arrastre tapa  
Cap pusher



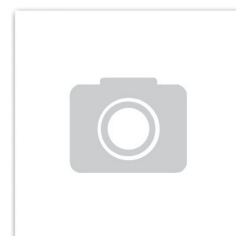
**010P667T**  
Bulón uña arrastre  
tapa  
Cap pusher pin



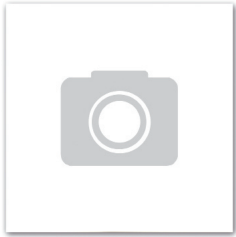
**002P264T**  
Bulón rueda uña  
arrastre tapa  
Cap pusher cam roll  
pin



**003P264T**  
Rueda uña arrastre  
tapa  
Cap pusher cam roll



**023P185TCOM**  
Freno salida tapa  
COMPLETO  
Cap magazine cover  
stop COMPLETE



086P543T

Mesa guía tapas vapor con chapas 087/088P543T

Steam vacuum cap guide disc w/ 087/088P543T plates



015P520T

Leva uñas acompañamiento tapas vapor

Steam vacuum cap pusher



042P539T

Bulón entrada vapor  
Pipe nipple



001P526T

Tornillo fijación tapa eje vapor

Steam vacuum turret shaft cap screw



001P553T

Separador tornillo fijación vapor

Steam vacuum cap screw spacer



034P539T

Anillo colector barrido vapor

Steam vacuum manifold ring



037P539T

Anillo válvula de barrido

Steam vacuum valve ring



035P539T

Zapata entrada vapor en brida bote-tapa

Steam vacuum feed pocket shoe



002P615T

Junta tórica brida bote-tapa vapor

O-Ring



011P640T

Muelle brida bote-tapa vapor

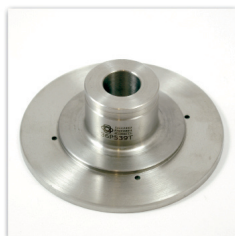
Steam vacuum feed pocket spring



010P528T

Bulón brida bote-tapa vapor INOX

Steam vacuum valve ring dive pin SS



036P539T

Guía anillo colector vapor

Steam vacuum manifold ring pilot



078P544T

Eje bridas vapor  
Steam vacuum feed turret shaft



055P516T

Casquillo  
Spacer



058P220T

Patín expulsor con bulones ref 019P228T montados

Cap centering cam w/ 019P228T assembly



124P030T

Polea embrague  
Clutch pulley



047L630T

Correa variadora  
Vari-speed V belt



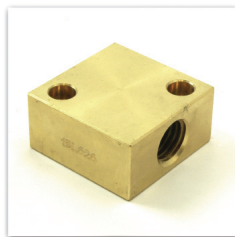
012L643T

Guías mesa motor  
Motor base guide



221P443T

Base motor  
ref. 031P443T  
Motor base  
ref. 031P443T



015L626T

Tuerca bronce soporte  
motor  
Motor base screw  
block



061P543T

Chapa guía soporte  
motor  
Motor base screw  
support



012L653T

Manilla  
Crank handle



102P543T

Mesa soporte motor  
Motor base bracket



198L653T

Casquillo varilla tensor  
motor  
Collar



236L616T

Rueda soporte motor  
Cap feed crank



014L626T

Eje roscado soporte  
motor  
Motor base screw



001L617T

Grupilla  
Retaining ring



012P297T

Tuerca bronce toma fuerza  
Safety clutch locknut



036P297T

Arandela toma fuerza  
Steel washer for safety clutch



014P297T

Muelle toma fuerza  
Safety clutch spring



008P297T

Soporte fundido toma fuerza  
Safety clutch sleeve



003P615T

Aro tórico toma fuerza  
O ring



011P297T

Arandela templada toma fuerza  
Ball slip disc



035P297T

Bola toma fuerza 7/8"  
Safety clutch ball 7/8"



010P297T

Arandela templada toma fuerza  
Ball retaining disc



009P297T

Soporte fundido toma fuerza  
Safety Clutch Housing



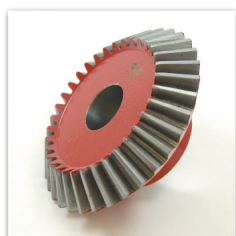
013P297T

Corona dentada toma fuerza  
Safety clutch sprocket



004P253T

Casquillo INOX  
Plain collar SS



006P297T

Piñón cónico toma fuerza  
Miter gear



006P597T

Soporte toma fuerza  
All angle filler drive stud



008P597T

Piñón cónico toma fuerza  
Miter gear



007P597T

Piñón toma fuerza  
Spec filler drive gear



022P216T

Arandela apoyo  
Thrust washer



019L617T

Grupilla  
Retaining ring



010P624T

Piñón cadena toma  
fuerza  
Filler drive take-up  
sprocket



002P626T

Eje piñón cadena toma  
fuerza  
Filler drive take-up  
stud