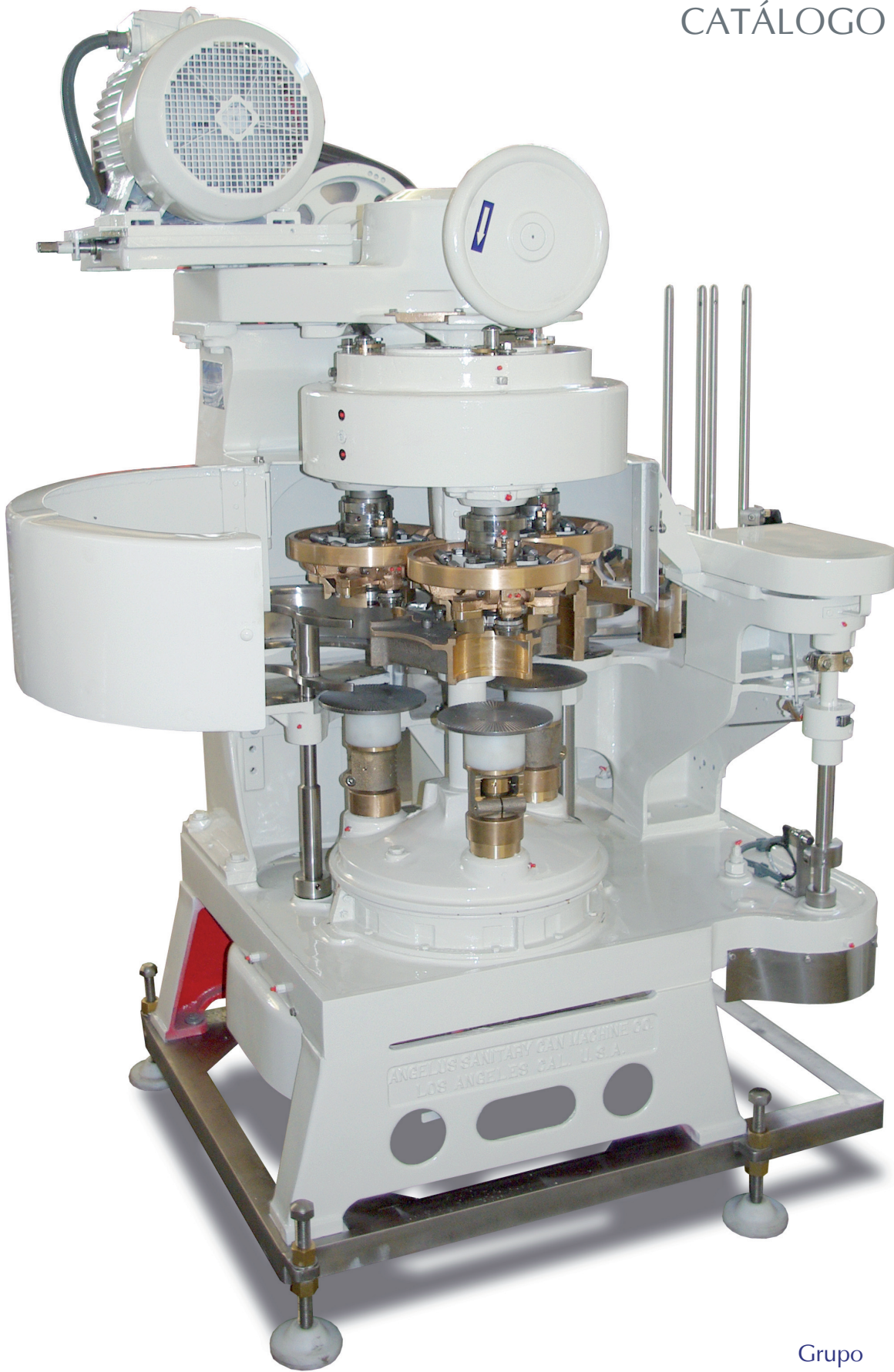
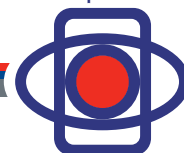


ANGELUS 53P

CATÁLOGO REPUESTO



Grupo
Ezquerra



Ezquerra
Industria Ezquerra Somme, s.l.

Somme®
SOMMETRAD, S.L.

COMERCIAL
Somme, s.l.

López Galicia
Cerradoras López Galicia, s.l.

Somme®
MAROC, S.A.R.L.

GRUPO	PÁGINA
53PB001.06.....	3
53PB002.02.....	4
53PB002.02-A.....	6
53PB003.....	7
53PB005.03.....	8
53PB014.01.....	9
53PB006.01.....	10
53PB008.....	12
53PB009.04.....	13
53PB011.02.....	15
53PB012.01.....	16
53PC	17
53PD002	18
50PD080	19
50PD043	20



029P243T INOX
Pata cerradora
 INOX 316
 Base leg SS 316



029P243T
Pata cerradora
 fundición
 Base leg SS casting



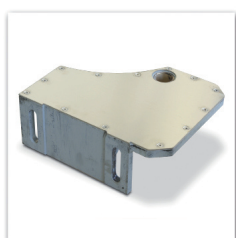
064P216T
Rodamiento
 Roller bearing



004P217T
Grupilla
 Retaining ring



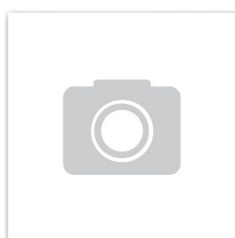
115P243T
Casquillo para retén
 Top plate bushing



003P543T
Mesa salida envases
 Discharge table



009P543T
Soporte mesa
 Cap guide bracket



180P543TI
Adaptador para pasar
 MSLF a DF INOX
 Feed frame extension
 block SS



002P523T
Piñón salida envases
 Discharge gear



015P228T
Tornillo tiralatas
 Discharge lever clamp
 pin



001P545T
Tiralatas bronce
 Discharge lever
 bronze



041P543T
Mesa soporte
 arrastrador
 Feed frame



042P543T
Chapa apoyo cubo
 portadados
 Plate for feed frame



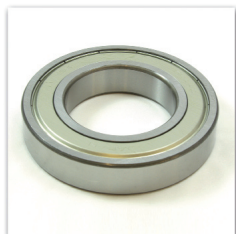
004P544T
Eje salida envases
 Discharge shaft



007P644T
Eje soporte chapa
 entrada envases
 Feed table support pin



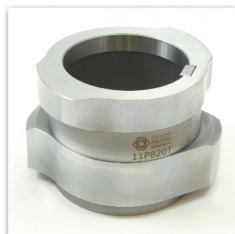
002P253T
Casquillo tope
 Set collar



026P216T
Rodamiento
Ball bearing



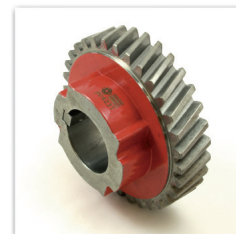
015P220T
Muelle patín expulsor
Cap centering cam spring



011P820T
Leva cierre
Seaming cam



112P223T
Piñón levas cierre
D.S. Cam drive gear



003V423T
Piñón levas cierre con
chaveta 003P247T
D.S. Head drive gear
w/ 003P247T



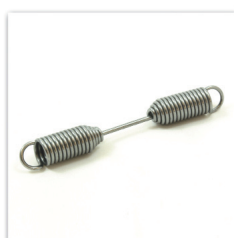
016P228T
Pivote
Dowel pin



020P228T
Bulón regulación
placa cierre
D.S. Spindle
adjustment screw



001P241BT
Caña soporte
cabezales
D.S. Head sleeve



021P241BT
Muelle palanca cierre
D.S. Head spring



022P241T
Tornillo sujeción leva
cierre
Setscrew for D.S. cam



030P241AT
Casquillo para eje
placa cierre
Upper turret
adjustment sleeve



017V241AT
Rodamiento
Upper spindle ball
bearing



604P641T
Tapa rodamiento
cabezal cierre
Lower head bearing



004P244CT
Eje de placa cierre
Upper chuck spindle



005P244BT
Varilla expulsora con
seta 009P228AT
Knockout rod
w/009P228AT
knockout rod end



049P244T
Seta expulsora
Knockout plate



002P247T
Chaveta leva cierre
Key for D.S. cam



001P210T
Chaveta pistón INOX
Lower chuck slide key



001P527T
Eje pistón
Lower chuck mandrel



007P228T
Tuerca almenada
pistón
Check nut



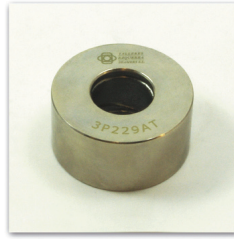
023P228T

Pasador pistón
Lower chuck lock pin



002P528T

Bulon ajuste muelle
presión pistón
Spring adjusting pin



003P229AT

Rueda pistón grande
bronce especial
Cam roll in special
bronze



601P629T

Rueda pistón pequeña
Lower chuck return
cam roll



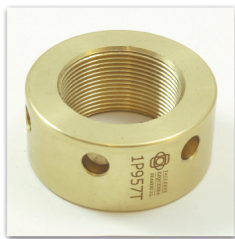
001P540T

Muelle presión pistón
Lower chuck spring



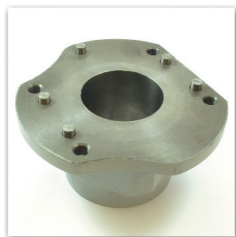
004P557T

Cacerola pistón
Lower chuck mandrel
cup



001P957T

Tuerca bronce presión
plato
Lower chuck adjusting
nut



001P508T

Soporte estrella central
Starwheel hub



001P508TI 316

Soporte estrella central
INOX 316
Starwheel hub SS 316



016P228T

Pivote
Dowel pin



028P216T

Rodamiento
Ball bearing



016P544AT

Eje central
Center shaft



013P202T

Soporte rodamiento
Lower bearing retainer
for turret



014P216T

Arandela axial para
piñón
Thrust washer



017P216T

Rodamiento axial
Ball thrust bearing



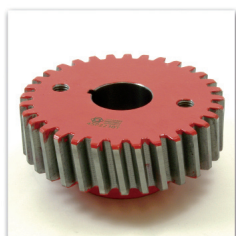
038P216T

Chaveta
Key for turret gear



602P616T

Tornillo para piñón
Tapper set screw



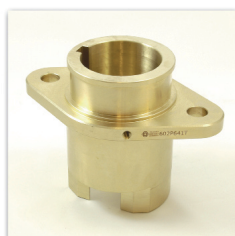
045P223BT

Piñón
Center lower drive
gear



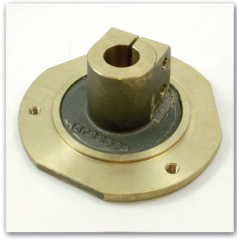
012P423T COM

Piñón con corona
ref. 013P423T
Intermediate gear with
main intermediate
pinion ref. 013P423T



602P641T

Camisa pistón bronce
Lower turret bushing



013P223BT
Moyú bronce para piñón
 Feed turret gear hub



001P523T
Piñón
 Feed turret gear



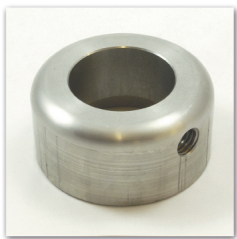
016P228T
Pivote
 Dowel pin



032P228T
Bulón
 Clamping pin



037P544T
Eje bridas
 Feed turret shaft



001P253T
Anillo
 Set collar



006P253T
Anillo
 Collar



016P563T
Mesa fundido soporte bridas
 Feed pocket hub



035L617T

Grupilla

Retaining ring



009P917T

Grupilla

Retaining ring



003P030T

Mangón de polea

Clutch sleeve



004P030T

Tuerca Embrague

Clutch collar



006P030T

Pivote embrague

Locking pin



007P030T

Arandela embrague

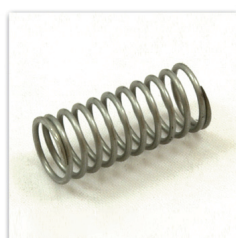
Clutch sleeve washer



008P030T

Cono embrague

Clutch cone



038P030T

Muelle pivote
embrague

Clutch locking pin
spring



007P430T

Patillas embrague

Disc clutch finger



011L630T

Bola

Clutch handle ball



001P240T

Muelle expulsor

Knockout rod spring



027P243T

Soporte palanca
marcha

Starter bracket



018P244T

Eje palanca marcha

Starter shaft



004P246T

Palanca marcha

Starting lever



007P246T

Herradura embrague

Yoke for clutch cone



013P446T

Soporte ferodo freno
embrague

Brake lever



004P253T

Casquillo INOX

Plain collar SS



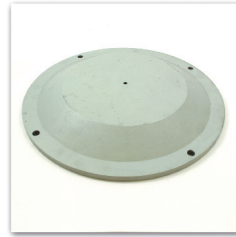
004P253T
Casquillo INOX
Plain collar SS



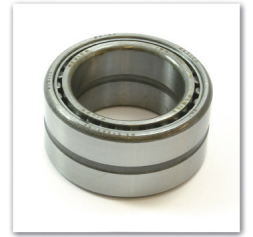
009P917T
Grupilla
Retaining ring



035L617T
Grupilla
Retaining ring



022P243T
Tapa carter superior
Top plate cover



064P216T
Rodamiento
Roller bearing



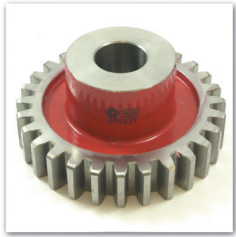
011L630T
Bola
Clutch handle ball



115P243T
Casquillo para retén
Top plate bushing



004P217T
Grupilla
Retaining ring



003P523T

Piñón

Cap feed drive gear



005P523T

Piñón

Cap feed intermediate gear



009L626T

Tornillo

Door latch screw



015L628T

Bulón puertas

Door hinge & latch pin



011P240T

Muelle freno tapas

Cap feed brake spring



001P440T

Muelle bulón puertas

Door latch spring



004P543T

Mesa soporte guías de tapas

Cap guide disc



019P544AT

Eje

Lower cap feed shaft



020P544T

Eje

Cap feed shaft upper



003P253T

Anillo para eje

Collar



009L653T

Casquillo

Cap feed set collar



003P256T

Chapa soporte reglas

Cap feed slide plate



010P256T

Casquillo

Spacing collar



011P256T

Varilla deposito alimentación tapas

Cap magazine post



012P256T

Bulón alimentador tapas

Bolt for slide



013P256T

Bulón alimentador tapas

Bolt for crank



113P256T

Soporte freno tapas

Cap feed brake bracket



114P256T

Soporte freno tapas

Cap feed brake drum



115P256T

Soporte freno tapas

Cap feed brake shoe



116P256T

Bulón muelle freno tapas

Cap feed brake spring screw



001P556T
Soporte reglas
alimentación tapas
Cap feed slide



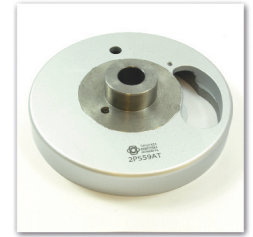
014P556T
Cuchilla regla
alimentación tapas
Parting knife blade RH



015P556T
Cuchilla regla
alimentación tapas
Parting knife blade LH



101P556T
Cuña alimentador
tapas
Cap magazine block



002P559AT
Leva uñas
acompañamiento
tapas
Cap pusher cam



009P264T
Eje
Gear stud



008P266AT
Uña gatillo disparo
tapas
NC NC Pawl



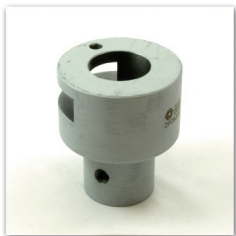
010P266T
Muelle
Drive pawl spring



011P266T
Bulón gatillo disparo
tapas
Drive pawl pin



001P282T
Leva gatillo disparo
tapas
NC NC Drive Bushing



002P282AT
Soporte gatillo disparo
tapas
NC NC Drive hub



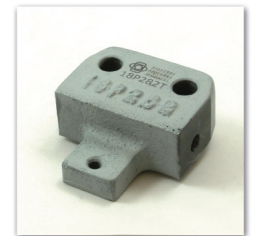
004P282BT
Gatillo bronce disparo
tapas
NC NC Trip knee



010P282T
Muelle gatillo bronce
disparo tapas
Spring for trip knee



013P282T
Bulón para rótula
Clevis pin



018P282T
Soporte uña disparo
tapas
Trip Knee bracket



002P582T
Varilla regulación
disparo tapas
NC NC Connecting
rod



004P582T
Soporte varilla disparo
tapas
NC NC Shaft bracket



017P582T
Varilla soporte
lanzadera tapas
NC NC Feel lever shaft



005P682T
Señal varilla disparo
tapas INOX
NC NC Trip lever



019P682T
Señal disparo tapas
NC NC Feel lever



009L653T
Casquillo
Cap feed set collar



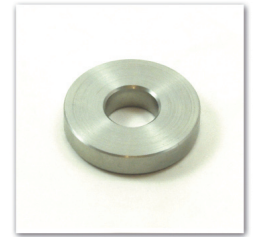
019P216T
Arandela
Thrust washer



005P253T
Anillo
Collar



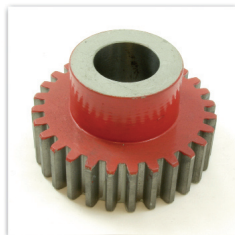
024P226T
Tornillo sujeción
piñón marcador
rotativo
Cap screw



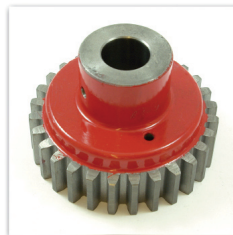
073P290T
Arandela INOX
Washer SS



020P264T COM
Eje COMPLETO y
MONTADO
Intermediate gear stud
COMPLETE



034P523T
Piñón marcador
rotativo
Marker intermediate
drive gear



033P523T
Piñón marcador
rotativo
Marker drive gear



010P616T

Tornillo para piñón
Timer gear draw bolt



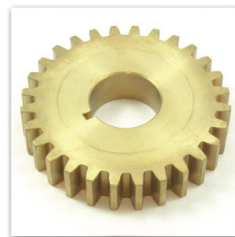
014P520T

Leva bronce palancas
entrada envases
Cam for timer star



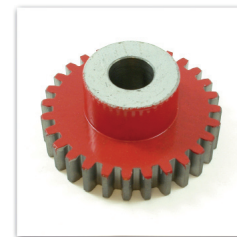
037P223T

Piñón
Intermediate pinion for
timer



038P223T

Piñón
Intermediate gear for
timer



004P523T

Piñón
Timer intermediate
gear



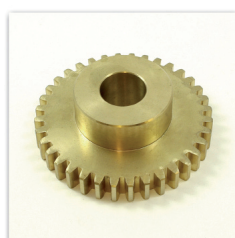
008P523AT

Piñón Ø153
Auxiliary timer drive
gear Ø603



009P523AT

Piñón
Auxiliary timer gear



010P523AT

Piñón Ø153
Auxiliary timer
intermediate gear
Ø603



013P523T

Piñón
Intermediate gear



014P523BT

Piñón Ø153
Auxiliary timer gear
Ø603



015P523BT

Piñón disco entrada
envases Ø153
Auxiliary timer gear
Ø603



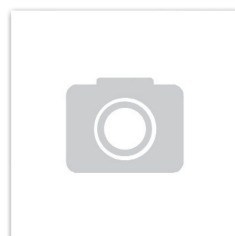
011P623T

Piñón
Timer drive gear



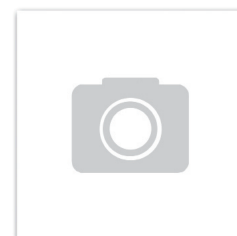
003P526T

Tornillo ajuste mesa
Adjusting screw



180P543TI

Adaptador para pasar
MSLF a DF INOX
Feed frame extension
block SS



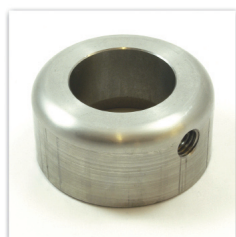
036P544T

Eje subida y bajada
mesa
Timer shaft



017P346T

Rodillo palanca
introducción
Cam roll



001P253T

Anillo
Set collar



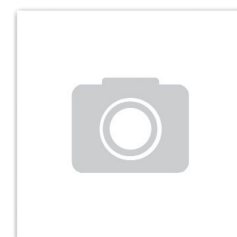
009P264T

Eje
Gear stud



036P669T

Soporte de ajuste
Adjusting support



002P576BIT

Guía entrada soporte
frenos INOX
Timer rail bracket SS



013P576T

Eje

Auxiliary timer intermediate gear shaft



014P576AT

Eje para piñón

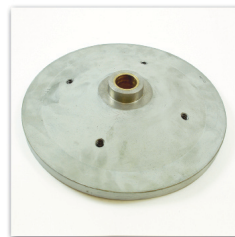
Auxiliary timer shaft



021P576T COM

Freno entrada envases
COMPLETO

Tension rail
COMPLETE



030P576T

Soporte disco entrada envases

Timer disc hub



031P576T

Palanca entrada envases

Finger for timer star



032P576T

Soporte dedos estrella entrada

Timer shaft finger hub



033P576T

Bulón palanca entrada envases

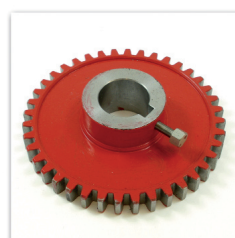
Finger pin



034P576T

Bulón

Cam roll pin



50P-003

Piñón Ø99

Auxiliary timer drive gear Ø401



50P-002

Piñón Ø99

Auxiliary intermediate drive gear Ø401



013P523T

Piñón Ø99

Auxiliary drive gear Ø401



045P523T

Piñón disco entrada envases Ø99

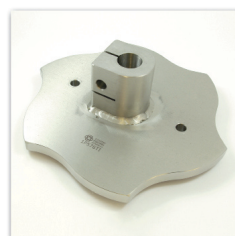
Auxiliary drive gear Ø401



005P290T

Muelle freno entrada envases

Tension rail spring



001P576TI

Estrella entrada envases Ø153 INOX CANNERY

Auxiliary timer star Ø603 SS CANNERY



025P576T

Estrella entrada envases Ø153 CAN-SHOP

Auxiliary timer star Ø603 CAN-SHOP



022P243T

Tapa carter superior
Top plate cover



044P243T

Tapa expulsor INOX
Cover for DS spindle
SS



045P243T

Arandela
Upper turret cover



124P244AT

Bulón puerta móvil
Head guard & timing
pin



009P254T

Tapas carter inferior en
fundición
Lower chuck cam
guards in casting



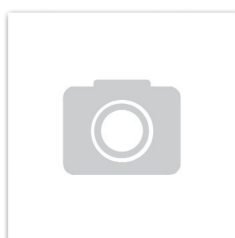
009P254TI

Tapas carter inferior
en INOX 316
Lower chuck cam
guards in SS 316



007P544T

Soporte puerta fija
Head guard bracket



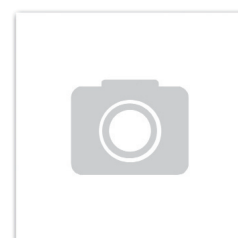
014P544T

Soporte puertas
Bracket for DS head
guard door



017P544T

Soporte puerta fija
Head guard bracket



160P554T

Coraza para piñón
Intermediate &
discharge gear guard



042P216T

Soporte galga
regulacion cierre

Wire feeler gauge
handle



044P216T

Llave para pistón

Lower chuck nut
wrench



045P216T

Llave para pistón

Lower chuck spring
adjustment wrench



004P331T

Bulon rueda cierre 1ª
operación

Smg roll pin 1st
operation



006P240T

Muelle

Cover stop spring



005P241T

Bulon rueda cierre 2ª
operación

Compression roll pin
2nd operation



007P241AT

Rodillo leva cierre

Cam roll



015P241T

Excéntrica palanca
cierre

Cam roll eccentric pin



004P541T

Varilla muelle cabezal
1ª operación

Clamping pin 1st
operation



018P241T

Varilla muelle cabezal
2ª operación

Clamping pin 2nd
operation



019P241T

Tope bronce
regulación rueda
cierre

Indicator



020P241T

Bulón fijación rueda
cierre

Clamping pin



01P357T

Platillo asiento envase

Lower chuck plate
cannery



003P559T

Uña arrastre tapa

Cap pusher



010P667T

Bulón uña arrastre
tapa

Cap pusher pin



002P264T

Bulón rueda uña
arrastre tapa

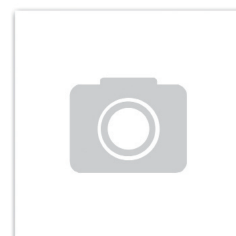
Cap pusher cam roll
pin



003P264T

Rueda uña arrastre
tapa

Cap pusher cam roll



023P185TCOM

Freno salida tapa
COMPLETO

Cap magazine cover
stop COMPLETE



124P030T

Polea embrague
Clutch pulley



047L630T

Correa variadora
Vari-speed V belt



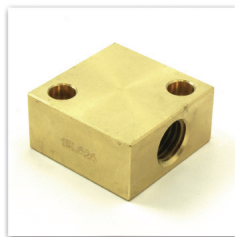
012L643T

Guías mesa motor
Motor base guide



221P443T

Base motor
ref. 031P443T
Motor base
ref. 031P443T



015L626T

Tuerca bronce soporte
motor
Motor base screw
block



061P543T

Chapa guía soporte
motor
Motor base screw
support



012L653T

Manilla
Crank handle



102P543T

Mesa soporte motor
Motor base bracket



198L653T

Casquillo varilla tensor
motor
Collar



236L616T

Rueda soporte motor
Cap feed crank



014L626T

Eje roscado soporte
motor
Motor base screw



001L617T

Grupilla
Retaining ring



012P297T

Tuerca bronce toma fuerza
Safety clutch locknut



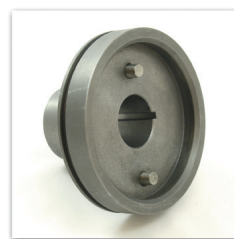
036P297T

Arandela toma fuerza
Steel washer for safety clutch



014P297T

Muelle toma fuerza
Safety clutch spring



008P297T

Soporte fundido toma fuerza
Safety clutch sleeve



003P615T

Aro tórico toma fuerza
O ring



011P297T

Arandela templada toma fuerza
Ball slip disc



035P297T

Bola toma fuerza 7/8"
Safety clutch ball 7/8"



010P297T

Arandela templada toma fuerza
Ball retaining disc



009P297T

Soporte fundido toma fuerza
Safety Clutch Housing



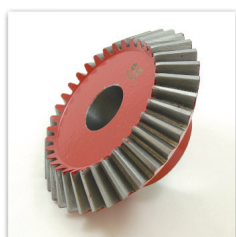
013P297T

Corona dentada toma fuerza
Safety clutch sprocket



004P253T

Casquillo INOX
Plain collar SS



006P297T

Piñón cónico toma fuerza
Miter gear



006P597T

Soporte toma fuerza
All angle filler drive stud



008P597T

Piñón cónico toma fuerza
Miter gear



007P597T

Piñón toma fuerza
Spec filler drive gear



022P216T

Arandela apoyo
Thrust washer