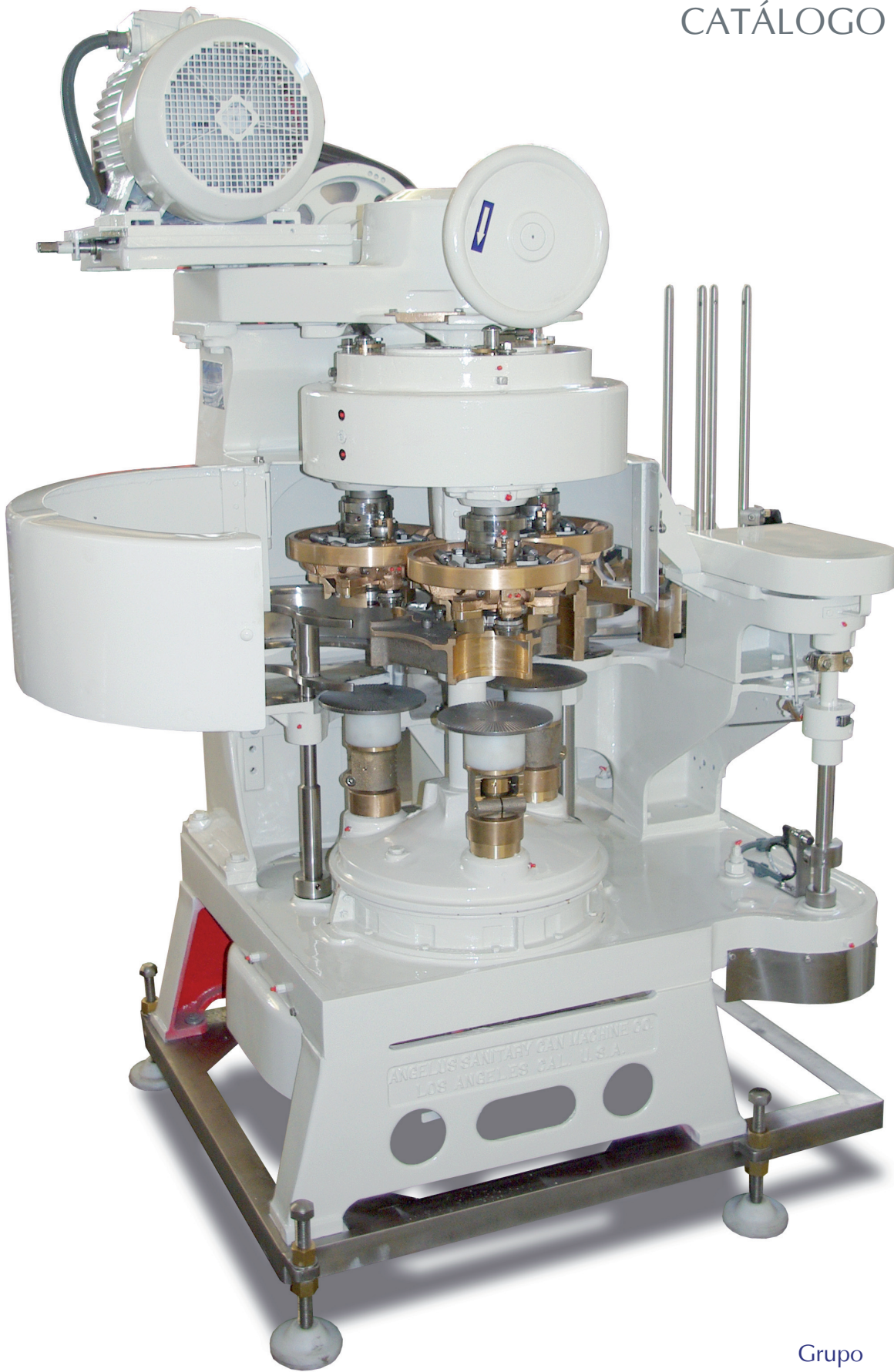


ANGELUS 50P

CATÁLOGO REPUESTO



Grupo
Ezquerra



Ezquerra
Industria Ezquerra Somme, s.l.

Somme®
SOMMETRAD, S.L.

COMERCIAL
Somme, s.l.

López Galicia
Cerradoras López Galicia, s.l.

Somme®
MAROC, S.A.R.L.

GRUPO	PÁGINA
50PB001.05.....	3
50PB002.03.....	4
50PB002.04.....	5
50PB003.03.....	7
50PB003.03-A.....	8
50PB004.01.....	10
50PB005.03.....	11
50PB006.03.....	12
59PB007.01.....	14
50PB008.01.....	15
50PB009.01.....	17
50PB010.01.....	18
50PB011.01.....	19
50PC.....	21
50PD043.....	22
50PD080.....	23
50PD107.....	24
50PD117.....	25
69PD058.....	26



016P543AT INOX

Base principal
INOX 316

Bed plate SS 316



029P243T INOX

Pata cerradora
INOX 316

Base leg SS 316



029P243T

Pata cerradora
fundición

Base leg SS casting



064P216T

Rodamiento

Roller bearing



004P217T

Grupilla

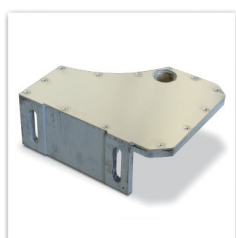
Retaining ring



115P243T

Casquillo para retén

Top plate bushing



003P543T

Mesa salida envases

Discharge table



009P543T

Soporte mesa

Cap guide bracket



011P543AT

Soporte alimentador
tapas

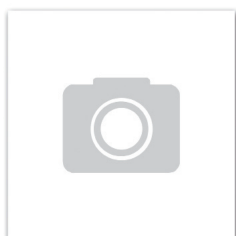
Cap feed support



004P543T

Mesa soporte guías de
tapas

Cap guide disc



180P543TI

Adaptador para pasar
MSLF a DF INOX

Feed frame extension
block SS



107P223T
Piñón central
Turret gear



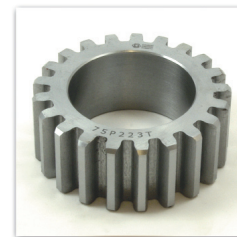
006P253T
Anillo
Collar



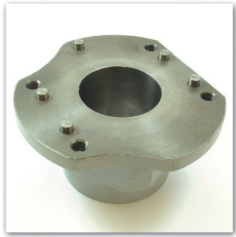
016P264T
Eje para piñón
Intermediate gear stud



048P223BT
Piñón
Intermediate gear

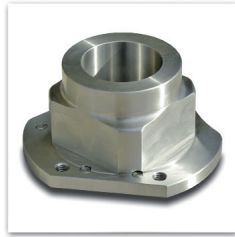


075P223T
Piñón
Intermediate gear pinion



001P508T

Soporte estrella central
Starwheel hub



001P508TI 316

Soporte estrella central
INOX 316
Starwheel hub SS 316



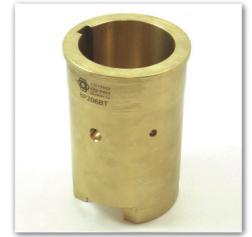
002P541BT

Soporte inferior
cabezal cierre
Lower turret



002P541BT INOX

Soporte inferior
cabezal cierre INOX
316
Lower turret SS 316



008P206BT

Camisa bronce
pistones
Lower turret bushing



005P541AT INOX

Torreta superior
soporte cabezales
INOX 316
Upper turret SS 316



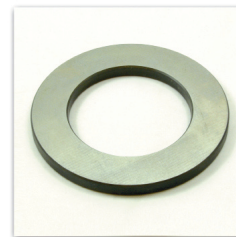
015P544AT NQ

Eje cabezal central
con niquel químico
Turret hollow shaft
with microplated
nickel



013P202T

Soporte rodamiento
Lower bearing retainer
for turret



014P216T

Arandela axial para
piñón
Thrust washer



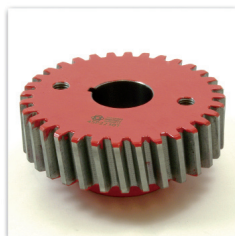
017P216T

Rodamiento axial
Ball thrust bearing



038P216T

Chaveta
Key for turret gear



045P223BT

Piñón
Center lower drive
gear



012P423T COM

Piñón con corona
ref. 013P423T
Intermediate gear with
main intermediate
pinion ref. 013P423T



001P527T

Eje pistón
Lower chuck mandrel



003P229AT

Rueda pistón grande
bronce especial
Cam roll in special
bronze



008P229BT

Bulon rueda pistón
Cam roll pin



008P229BRT

Bulon pistón
Cam roll pin



006P206AT

Pistón bronce
Lower chuck slide



001P210T

Chaveta pistón INOX
Lower chuck slide key



001P540T

Muelle presión pistón
Lower chuck spring



023P228T
Pasador pistón
Lower chuck lock pin



003P528T
Bulon pistón
Lower chuck spacer



002P528T
Bulon ajuste muelle
presión pistón
Spring adjusting pin



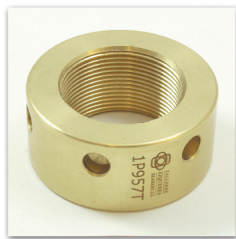
004P557T
Cacerola pistón
Lower chuck mandrel
cup



007P228T
Tuerca almenada
pistón
Check nut



001P254T
Espiga allen pistón
INOX
Hex socket set screw
SS



001P957T
Tuerca bronce presión
plato
Lower chuck adjusting
nut



031P416T
Arandela
Washer



024P417T
Grupilla
Retaining ring



003P464T
Eje con anillo ref.
004P253T y grupilla
024P417T
Intermediate gear Stud
w/ 004P253T and
024P417T



073P290T
Arandela INOX
Washer SS



064P220T
Leva pistones
Lower chuck cam



032P220T
Chapa para leva pistón
Plate



071P220T
Chapa para leva pistón
Plate



066P220T
Contraleva pistones
Lower chuck cam
guide



069P220T
Leva pistones can
shop y vapor
Lower chuck cam
can-shop and steam
vacuum



053P220T
Contraleva pistones
can shop y vapor
Lower chuck cam
guide can-shop and
steam vacuum



015P220T
Muelle leva
 acompañamiento tapa
 Cap centering cam
 spring



016P228T
Pivote
 Dowel pin



020P228T
Bulón regulación
 placa cierre
 D.S. Spindle
 adjustment screw



001P241BT
Caña soporte
 cabezales
 D.S. Head sleeve



021P241BT
Muelle palanca cierre
 D.S. Head spring



022P241T
Tornillo sujeción leva
 cierre
 Setscrew for D.S. cam



030P241AT
Casquillo para eje
 placa cierre
 Upper turret
 adjustment sleeve



017V241AT
Rodamiento
 Upper spindle ball
 bearing



004P244CT
Eje de placa cierre
 Upper chuck spindle



005P244BT
Varilla expulsora con
 seta 009P228AT
 Knockout rod
 w/009P228AT
 knockout rod end



049P244T
Seta expulsora
 Knockout plate



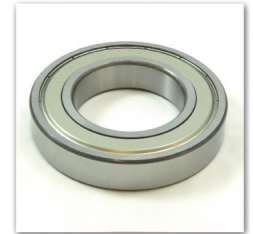
049P244RT
Seta expulsora
 Knockout plate



016P544AT
Eje central
 Center shaft



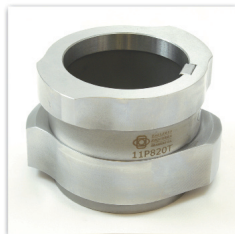
002P247T
Chaveta leva cierre
 Key for D.S. cam



026P216T
Rodamiento
 Ball bearing



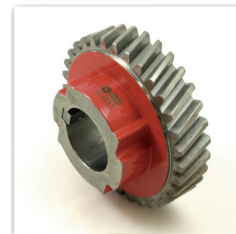
028P216T
Rodamiento
 Ball bearing



011P820T
Leva cierre
 Seaming cam



112P223T
Piñón levas cierre
 D.S. Cam drive gear



003V423T
Piñón levas cierre con
 chaveta 003P247T
 D.S. Head drive gear
 w/ 003P247T



604P641T
Tapa rodamiento
 cabezal cierre
 Lower head bearing



015P220T

Muelle leva
acompañamiento tapa
Cap centering cam
spring



016P228T

Pivote
Dowel pin



020P228T

Bulon regulación
placa cierre
D.S. Spindle
adjustment screw



001P241BT

Caña soporte
cabezales
D.S. Head sleeve



021P241BT

Muelle palanca cierre
D.S. Head spring



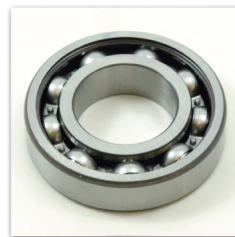
022P241T

Tornillo sujeción leva
cierre
Setscrew for D.S. cam



030P241AT

Casquillo para eje
placa cierre
Upper turret
adjustment sleeve



017V241AT

Rodamiento
Upper spindle ball
bearing



004P244CT

Eje de placa cierre
Upper chuck spindle



005P244BT

Varilla expulsora con
seta 009P228AT
Knockout rod
w/009P228AT
knockout rod end



049P244T

Seta expulsora
Knockout plate



049P244RT

Seta expulsora
Knockout plate



016P544AT

Eje central
Center shaft



002P247T

Chaveta leva cierre
Key for D.S. cam



013P216T

Arandela apoyo
Thrust washer



017P220T

Leva cierre
D.S. Cam



089P223DT

Piñón leva cierre
D.S. Head drive gear



090P223T

Piñón leva cierre
D.S. Cam drive gear



035P523T

Piñón
D.S. Center gear



018V241AT

Rodamiento
Lower head bearing



055P516T
Casquillo
Spacer



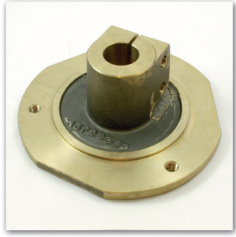
039P220T
Patín expulsor
Cap centering cam



019P228T
Bulón patín expulsor
Cap centering cam
stud



010P243T
Patín expulsor vapor
Cap centering cam
steam vacuum



013P223BT
Moyú bronce para piñón
 Feed turret gear hub



001P523T
Piñón
 Feed turret gear



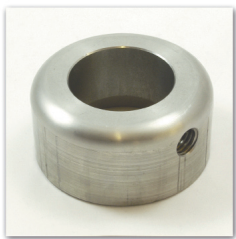
016P228T
Pivote
 Dowel pin



032P228T
Bulón
 Clamping pin



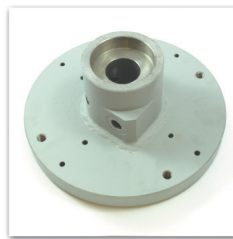
037P544T
Eje bridas
 Feed turret shaft



001P253T
Anillo
 Set collar



006P253T
Anillo
 Collar



016P563T
Mesa fundido soporte bridas
 Feed pocket hub



003P030T
Mangón de polea
Clutch sleeve



004P030T
Tuerca Embrague
Clutch collar



006P030T
Pivote embrague
Locking pin



007P030T
Arandela embrague
Clutch sleeve washer



008P030T
Cono embrague
Clutch cone



038P030T
Muelle pivote
embrague
Clutch locking pin
spring



007P430T
Patillas embrague
Disc clutch finger



011L630T
Bola
Clutch handle ball



001P240T
Muelle expulsor
Knockout rod spring



027P243T
Soporte palanca
marcha
Starter bracket



018P244T
Eje palanca marcha
Starter shaft



004P246T
Palanca marcha
Starting lever



007P246T
Herradura embrague
Yoke for clutch cone



013P446T
Soporte ferodo freno
embrague
Brake lever



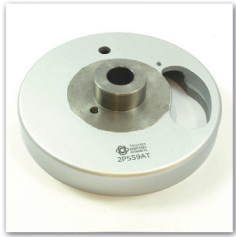
035L617T
Grupilla
Retaining ring



009P917T
Grupilla
Retaining ring



004P253T
Casquillo INOX
Plain collar SS



002P559AT

Leva uñas
acompañamiento
tapas

Cap pusher cam



003P523T

Piñón

Cap feed drive gear



005P523T

Piñón

Cap feed intermediate
gear



009L626T

Tornillo

Door latch screw



015L628T

Bulón puertas

Door hinge & latch
pin



001P440T

Muelle bulón puertas

Door latch spring



019P544AT

Eje

Lower cap feed shaft



020P544T

Eje

Cap feed shaft upper



003P253T

Anillo para eje

Collar



003P256T

Chapa soporte reglas

Cap feed slide plate



010P256T

Casquillo

Spacing collar



011P256T

Varilla deposito
alimentación tapas

Cap magazine post



012P256T

Bulón alimentador
tapas

Bolt for slide



013P256T

Bulón alimentador
tapas

Bolt for crank



001P556T

Soporte reglas
alimentación tapas

Cap feed slide



003P556T

Biela alimentador
tapas

Cap feed crank



005P559TCOM

Freno tapas bronce
COMPLETO

Cap guide pressure
shoe COMPLETE



006P559TCOM

Freno tapas bronce
COMPLETO

Cap guide pressure
shoe COMPLETE



009P264T

Eje

Gear stud



008P266AT

Uña gatillo disparo
tapas

NC NC Pawl



010P266T

Muelle

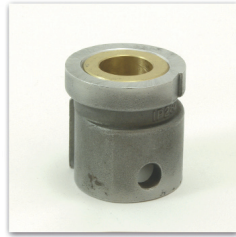
Drive pawl spring



011P266T

Bulón gatillo disparo tapas

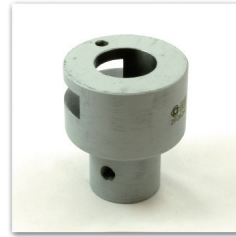
Dive pawl pin



001P282T

Leva gatillo disparo tapas

NC NC Drive Bushing



002P282AT

Soporte gatillo disparo tapas

NC NC Drive hub



004P282BT

Gatillo bronce disparo tapas

NC NC Trip knee



010P282T

Muelle gatillo bronce disparo tapas

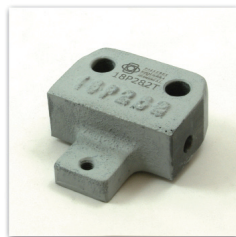
Spring for trip knee



013P282T

Bulón para rótula

Clevis pin



018P282T

Soporte uña disparo tapas

Trip Knee bracket



005P682T

Señal varilla disparo tapas INOX

NC NC Trip lever



009L653T

Casquillo

Cap feed set collar



004P556TCOM

Regla alimentación tapas COMPLETA

Parting knife LH COMPLETE



005P556TCOM

Regla alimentación tapas COMPLETA

Parting knife RH COMPLETE



006P556T

Empujador tapas

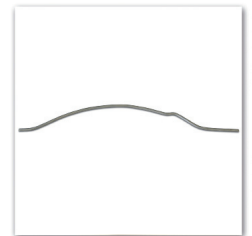
Center pusher



002P556T

Biela bronce alimentador tapas

Cap feed link



019P682T

Señal disparo tapas

NC NC Feel lever



004P582T

Soporte varilla disparo tapas

NC NC Shaft bracket



017P582T

Varilla soporte lanzadera tapas

NC NC Feel lever shaft



002P582T

Varilla regulación disparo tapas

NC NC Connecting rod



031P282T

Varilla gatillo disparo tapas

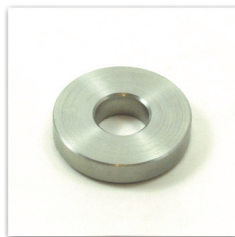
Pin



020P264T COM
 Conjunto eje + anillo
 + arandela + tornillo
 Kit shaft + collar +
 washer + screw



024P226T
 Tornillo sujeción
 piñón marcador
 rotativo
 Cap screw



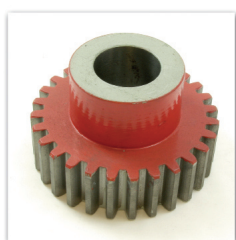
073P290T
 Arandela INOX
 Washer SS



019P216T
 Arandela
 Thrust washer



033P523T
 Piñón marcador
 rotativo
 Marker drive gear



034P523T
 Piñón marcador
 rotativo
 Marker drive gear



005P253T
 Anillo
 Collar



009L653T
 Casquillo
 Cap feed set collar



006P253T
 Anillo
 Collar



010P616T

Tornillo para piñón
Timer gear draw bolt



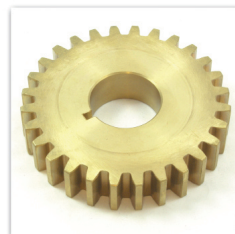
014P520T

Leva bronce palancas
entrada envases
Cam for timer star



037P223T

Piñón
Intermediate pinion for
timer



038P223T

Piñón
Intermediate gear for
timer



002P523T

Piñón salida envases
Discharge gear



004P523T

Piñón
Timer intermediate
gear



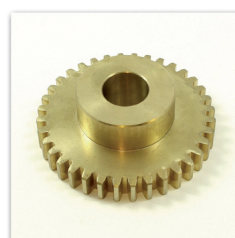
008P523AT

Piñón Ø153
Auxiliary timer drive
gear Ø603



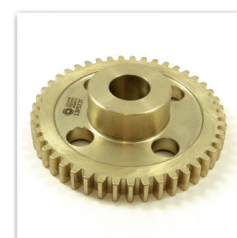
009P523AT

Piñón
Auxiliary timer gear



010P523AT

Piñón Ø153
Auxiliary timer
intermediate gear
Ø603



013P523T

Piñón
Intermediate gear



014P523BT

Piñón Ø153
Auxiliary timer gear
Ø603



015P523BT

Piñón disco entrada
envases Ø153
Auxiliary timer gear
Ø603



011P623T

Piñón
Timer drive gear



003P526T

Tornillo ajuste mesa
Adjusting screw



015P228T

Tornillo tiralatas
Discharge lever clamp
pin



004P544T

Eje salida envases
Discharge shaft



036P544T

Eje subida y bajada
mesa
Timer shaft



017P346T

Rodillo palanca
introducción
Cam roll



001P253T

Anillo
Set collar



002P253T

Casquillo tope
Set collar



009P264T

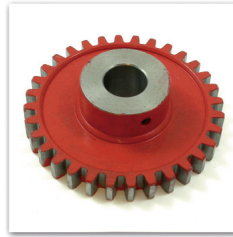
Eje
Gear stud



50P-003

Piñón Ø99

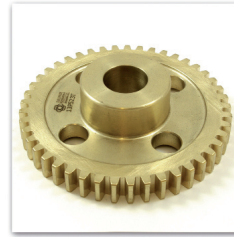
Auxiliary timer drive gear Ø401



50P-002

Piñón Ø99

Auxiliary intermediate drive gear Ø401



013P523T

Piñón Ø99

Auxiliary drive gear Ø401



045P523T

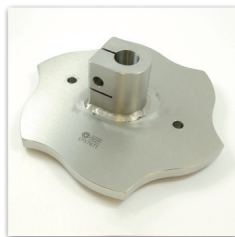
Piñón disco entrada envases Ø99

Auxiliary drive gear Ø401



036P669T

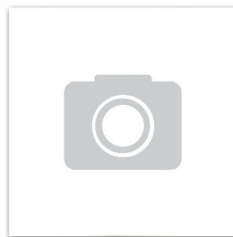
Soporte de ajuste
Adjusting support



001P576TI

Estrella entrada envases Ø153 INOX CANNERY

Auxiliary timer star Ø603 SS CANNERY



002P576BIT

Guía entrada soporte frenos INOX

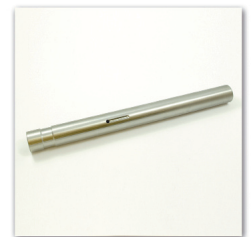
Timer rail bracket SS



013P576T

Eje

Auxiliary timer intermediate gear shaft



014P576AT

Eje para piñón

Auxiliary timer shaft



021P576T COM

Freno entrada envases COMPLETO

Tension rail COMPLETE



025P576T

Estrella entrada envases Ø153 CAN-SHOP

Auxiliary timer star Ø603 CAN-SHOP



005P290T

Muelle freno entrada envases

Tension rail spring



030P576T

Soporte disco entrada envases

Timer disc hub



057P669T

Disco entrada envases INOX

Timer disc cover SS



031P576T

Palanca entrada envases

Finger for timer star



032P576T

Soporte dedos estrella entrada

Timer shaft finger hub



033P576T

Bulón palanca entrada envases

Finger pin



034P576T

Bulón

Cam roll pin



001P545T

Tiralatas bronce

Discharge lever bronze



022P243T

Tapa carter superior
Top plate cover



044P243T

Tapa expulsor INOX
Cover for DS spindle
SS



045P243T

Arandela
Upper turret cover



124P244AT

Bulón puerta móvil
Head guard & timing
pin



017P544T

Soporte puerta fija
Head guard bracket



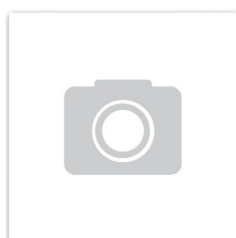
013P544T

Puerta cabezal
izquierda móvil INOX
Head guard door SS



014P544T

Soporte puertas
Bracket for DS head
guard door



015P554T

Puerta cabezal
derecha fija INOX
Main head guard



010P259AT

Tapa para leva
acompañamiento
tapas
Cover for cap pusher
cam



009P254T

Tapas carter inferior en
fundición
Lower chuck cam
guards in casting



009P254TI

Tapas carter inferior
en INOX 316
Lower chuck cam
guards in SS 316



042P216T

Soporte galga
regulacion cierre

Wire feeler gauge
handle



044P216T

Llave para pistón

Lower chuck nut
wrench



045P216T

Llave para pistón

Lower chuck spring
adjustment wrench



002P559AT

Leva uñas
acompañamiento
tapas

Cap pusher cam



003P523T

Piñón

Cap feed drive gear



005P523T

Piñón

Cap feed intermediate
gear



009L626T

Tornillo

Door latch screw



015L628T

Bulón puertas

Door hinge & latch
pin



001P440T

Muelle bulón puertas

Door latch spring



019P544AT

Eje

Lower cap feed shaft



020P544T

Eje

Cap feed shaft upper



003P253T

Anillo para eje

Collar



003P256T

Chapa soporte reglas

Cap feed slide plate



010P256T

Casquillo

Spacing collar



011P256T

Varilla deposito
alimentación tapas

Cap magazine post



012P256T

Bulón alimentador
tapas

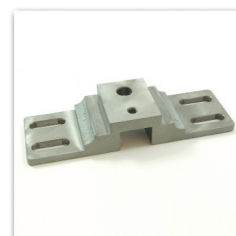
Bolt for slide



013P256T

Bulón alimentador
tapas

Bolt for crank



001P556T

Soporte reglas
alimentación tapas

Cap feed slide



003P556T

Biela alimentador
tapas

Cap feed crank



009P264T

Eje

Gear stud



008P266AT

Uña gatillo disparo
tapas

NC NC Pawl



010P266T

Muelle

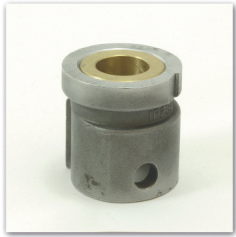
Drive pawl spring



011P266T

Bulón gatillo disparo
tapas

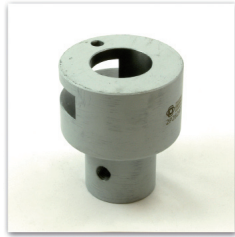
Dive pawl pin



001P282T

Leva gatillo disparo tapas

NC NC Drive Bushing



002P282AT

Soporte gatillo disparo tapas

NC NC Drive hub



004P282BT

Gatillo bronce disparo tapas

NC NC Trip knee



010P282T

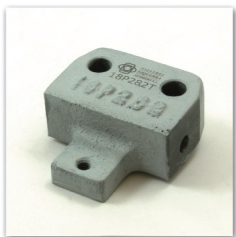
Muelle gatillo bronce disparo tapas

Spring for trip knee



013P282T

Bulón para rótula
Clevis pin



018P282T

Soporte uña disparo tapas

Trip Knee bracket



002P582T

Varilla regulación disparo tapas

NC NC Connecting rod



005P682T

Señal varilla disparo tapas INOX

NC NC Trip lever



009L653T

Casquillo
Cap feed set collar



089P556T COM

Regla alimentación tapas marcador rotativo COMPLETA

Parting knife LH rotary marker COMPLETE



090P556T COM

Regla alimentación tapas marcador rotativo COMPLETA

Parting knife RH rotary marker COMPLETE



099P556T

Empujador tapas marcador rotativo

Center pusher rotary marker



101P556T

Cuña alimentador tapas

Cap magazine block



076P556T

Biela alimentador tapas marcador rotativo

Cap feed crank rotary marker



129P256T

Biela bronce alimentador tapas

Cap feed link



031P282T

Varilla gatillo disparo tapas

Pin



004P582T

Soporte varilla disparo tapas

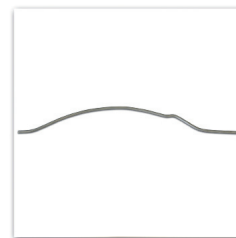
NC NC Shaft bracket



017P582T

Varilla soporte lanzadera tapas

NC NC Feel lever shaft



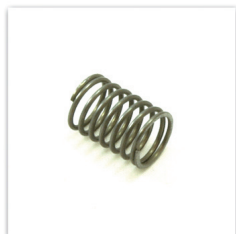
019P682T

Señal disparo tapas

NC NC Feel lever



004P331T
Bulon rueda cierre 1ª
operación
Smg roll pin 1st
operation



006P240T
Muelle
Cover stop spring



005P241T
Bulon rueda cierre 2ª
operación
Compression roll pin
2nd operation



007P241AT
Rodillo leva cierre
Cam roll



015P241T
Excéntrica palanca
cierre
Cam roll eccentric pin



004P541T
Varilla muelle cabezal
1ª operación
Clamping pin 1st
operation



018P241T
Varilla muelle cabezal
2ª operación
Clamping pin 2nd
operation



019P241T
Tope bronce
regulación rueda
cierre
Indicator



020P241T
Bulón fijación rueda
cierre
Clamping pin



01P357T
Platillo asiento envase
Lower chuck plate
cannery



003P559T
Uña arrastre tapa
Cap pusher



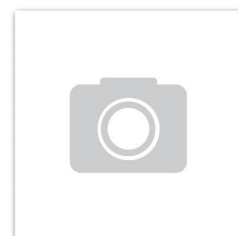
010P667T
Bulón uña arrastre
tapa
Cap pusher pin



002P264T
Bulón rueda uña
arrastre tapa
Cap pusher cam roll
pin



003P264T
Rueda uña arrastre
tapa
Cap pusher cam roll



023P185TCOM
Freno salida tapa
COMPLETO
Cap magazine cover
stop COMPLETE



012P297T

Tuerca bronce toma fuerza
Safety clutch locknut



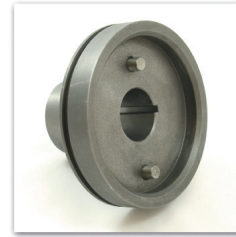
036P297T

Arandela toma fuerza
Steel washer for safety clutch



014P297T

Muelle toma fuerza
Safety clutch spring



008P297T

Soporte fundido toma fuerza
Safety clutch sleeve



003P615T

Aro tórico toma fuerza
O ring



011P297T

Arandela templada toma fuerza
Ball slip disc



035P297T

Bola toma fuerza 7/8"
Safety clutch ball 7/8"



010P297T

Arandela templada toma fuerza
Ball retaining disc



009P297T

Soporte fundido toma fuerza
Safety Clutch Housing



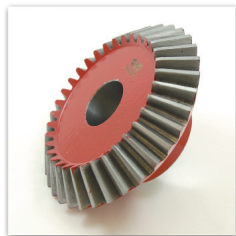
013P297T

Corona dentada toma fuerza
Safety clutch sprocket



004P253T

Casquillo INOX
Plain collar SS



006P297T

Piñón cónico toma fuerza
Miter gear



006P597T

Soporte toma fuerza
All angle filler drive stud



008P597T

Piñón cónico toma fuerza
Miter gear



007P597T

Piñón toma fuerza
Spec filler drive gear



022P216T

Arandela apoyo
Thrust washer



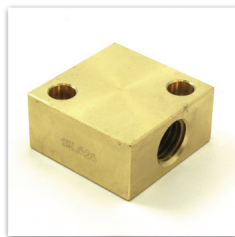
012L643T

Guías mesa motor
Motor base guide



221P443T

Base motor
ref. 031P443T
Motor base
ref. 031P443T



015L626T

Tuerca bronce soporte
motor
Motor base screw
block



061P543T

Chapa guía soporte
motor
Motor base screw
support



012L653T

Manilla
Crank handle



102P543T

Mesa soporte motor
Motor base bracket



198L653T

Casquillo varilla tensor
motor
Collar



236L616T

Rueda soporte motor
Cap feed crank



014L626T

Eje roscado soporte
motor
Motor base screw



001L617T

Grupilla
Retaining ring



012P297T

Tuerca bronce toma fuerza
Safety clutch locknut



036P297T

Arandela toma fuerza
Steel washer for safety clutch



014P297T

Muelle toma fuerza
Safety clutch spring



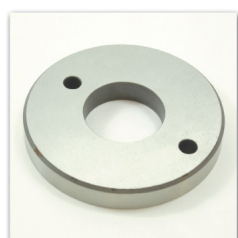
008P297T

Soporte fundido toma fuerza
Safety clutch sleeve



003P615T

Aro tórico toma fuerza
O ring



011P297T

Arandela templada toma fuerza
Ball slip disc



035P297T

Bola toma fuerza 7/8"
Safety clutch ball 7/8"



010P297T

Arandela templada toma fuerza
Ball retaining disc



009P297T

Soporte fundido toma fuerza
Safety Clutch Housing



013P297T

Corona dentada toma fuerza
Safety clutch sprocket



004P253T

Casquillo INOX
Plain collar SS



006P297T

Piñón cónico toma fuerza
Miter gear



039P030T

Soporte polea
transmisión

Clutch spring hub



124P030T

Polea embrague
Clutch pulley



043L630T

Correa variadora 70 x
20 x 1700

Vari-speed motor belt
70 x 20 x 1700



002P626T

Eje para piñón cadena
toma fuerza

Filler drive take up
stud



010P624T

Piñón cadena toma
fuerza

Filler drive take up
sprocket



019L617T

Grupilla
Retaining ring