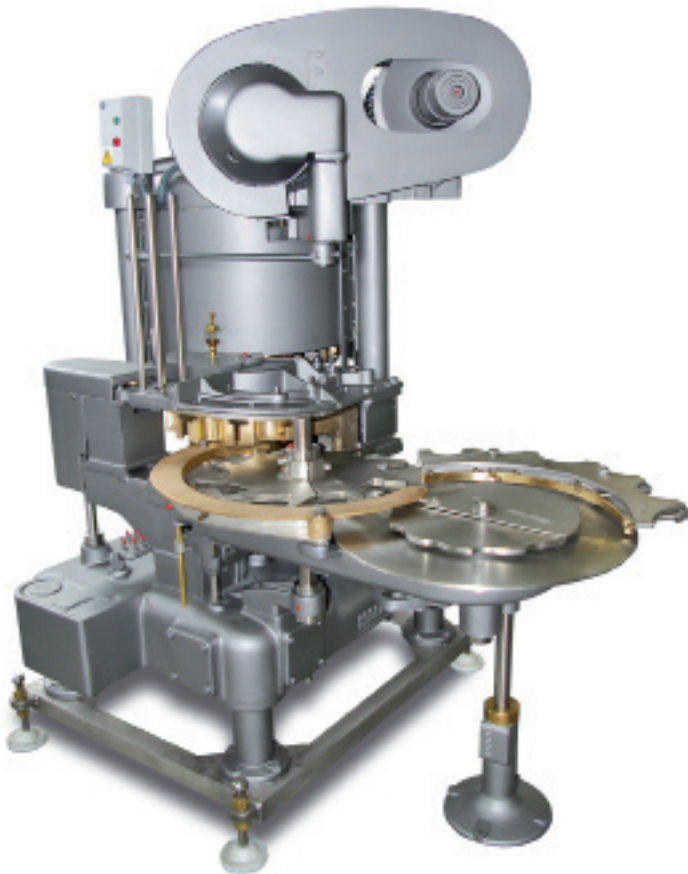
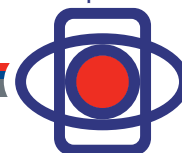


ANGELUS 40P

CATÁLOGO REPUESTO



Grupo
Ezquerra



Ezquerra
Industria Ezquerra Somme, s.l.

Somme[®]
SOMMETRAD, S.L.

COMERCIAL
Somme, s.l.

López Galicia
Cerradoras López Galicia, s.l.

Somme[®]
MAROC, S.A.R.L.

GRUPO	PÁGINA
40PB001.01.....	3
40PB001.03.....	4
40PB002.03.....	5
40PB002.03A.....	6
40PB003.02.....	8
40PB004.04.....	10
40PB006.06.....	13
40PB007.04.....	15
40PB010.01.....	17
40PC1.....	18
40PD003.....	19
40PD012.....	20
40PB8.02.....	22



048P223BT

Piñón

Intermediate gear



075P223T

Piñón

Intermediate gear
pinion



016P264T

Eje para piñón

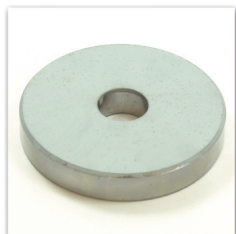
Intermediate gear stud



001P423T

Piñón

Cap feed intermediate
gear



010P416T
Arandela base
columna
Washer



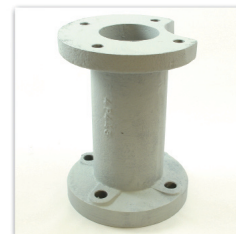
021P417T
Grupilla
Retaining ring



012P444T
Columna
Base column



073P290T
Arandela INOX
Washer SS



004P443T
Pata
Base leg



012P423T
Piñón con
piñón ref. 013P423T
Intermediate gear +
Main intermediate
pinion ref. 013P423T



003P464T
Eje con anillo ref.
004P253T
Intermediate gear
stud + collar ref.
004P253T



004P464T
Anillo
Collar



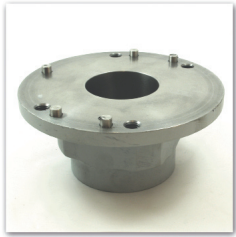
022P264T
Eje para piñón
Cap feed intermediate
gear stud



001P423T
Piñón
Cap feed intermediate
gear



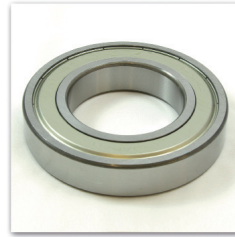
001P454T
Tapa INOX
Base cover SS



001P208T
Soporte estrella central
Starwheel hub w/ pin
016P228T



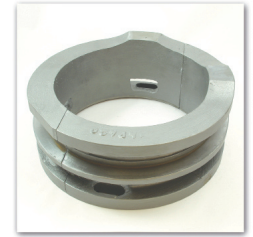
016P228T
Pivote
Pin



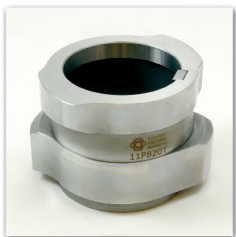
026P216T
Rodamiento
Ball bearing



028P216T
Rodamiento
Ball bearing



014P420T
Leva expulsores
Cap centering &
knockout cam



011P820T
Leva cierre
Seaming cam



112P223T
Piñón levas cierre
D.S. cam drive gear



003V423T
Piñón levas cierre
D.S. head drive gear
w/ 003P427T key



003P427T
Chaveta
Key



020P228T
Bulón regulación
placa cierre
D.S. spindle
adjustment screw



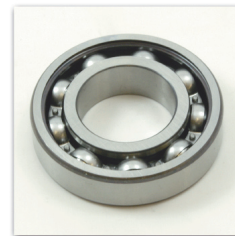
001P241BT
Caña soporte
cabezales
D.S. head sleeve



021P241BT
Muelle palanca cierre
D.S. head spring



030P241AT
Casquillo para eje
placa cierre
Upper turret adjusting
sleeve



017V241AT
Rodamiento
Upper spindle ball
bearing



604P641T
Tapa rodamiento
cabezal cierre
Lower head bearing



077P243T
Soporte guia expulsor
Knockout rod lever
guide



118P244T
Eje placa cierre
Upper chuck spindle



003P444T
Eje central piñón
superior
Center shaft



022P247T
Tornillo sujecion
levas cierre
Screw for seaming
cam



002P247T
Chaveta
Key for DS cam



071P243T
Guía bronce expulsor
Knockout rod lever



119P244T
Varilla expulsora
Knockout rod



049P244T
Seta expulsora
Knockout plate



017P346T
Rodillo
Cam roll



004P206AT
Cacerola pistón
bronce
Lower chuck cap



006P206AT
Pistón bronce
Lower chuck slide



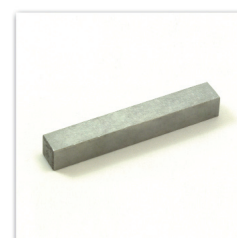
001P210T
Chaveta pistón INOX
Lower chuck slide key



014P216T
Arandela axial para
piñón
Thrust washer



026P216T
Rodamiento
Ball bearing



038P216T
Chaveta
Key for turret gear



602P616T
Tornillo para piñón
Taper set screw



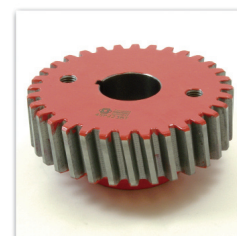
013P420T A+B
Contraleva pistón
Lower chuck return
cam



057P420T
Leva pistón
Lower chuck cam



062P420T
Chapa INOX leva
pistón
Lower chuck cam
plate



045P223BT
Piñón
Center lower drive
gear



107P223T
Piñón central
Main turret gear



001P227CT
Eje pistón
Lower chuck mandrel



007P228T
Tuerca almenada
pistón
Check nut



022P228T
Varilla pistón
Spring adjusting pin



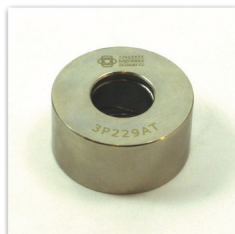
023P228T
Pasador pistón
Lower chuck lock pin



024P228T
Tope pistón
Lower chuck spacer



001P428T
Pivote puerta pistones
Lower turret guard pin



003P229AT
Rueda pistón grande
bronce especial
Cam roll in special
bronze



004L629T
Bulón rueda pistón
Lower chuck cam roll
pin



601P629T
Rueda pistón pequeña
Lower chuck return
cam roll



004P240T
Muelle presión pistón
Lower chuck spring



018V241AT
Rodamiento
Lower head bearing



602P641T
Camisa pistón bronce
Lower turret bushing



001P254T
Espiga allen pistón
INOX
Hex socket set screw
SS



002P454AT
Puerta pistones
Lower turret guard



025P416T
Arandela
Thrust washer



013P223BT
Moyú bronce para
piñón
Knockout rod



046P223T
Piñón salida
Discharge gear



008P623T
Piñón central
Feed turret gear



018P623T
Cubo bronce
porta-dados
Internal feed gear



005P662T
Arandela cubo bronce
porta-dados
Liner



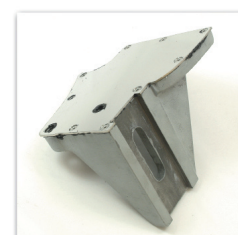
019P623T
Piñón cubo bronce
porta-dados
Drive gear for feed
arms



023P226T
Tornillo
Cap screw



015P228T
Tornillo tiralatas
Discharge lever clamp
pin



005P443T
Mesa salida latas +
chapa 026P443T
Discharge table



006P443T
Soporte eje salida latas
Discharge table
bearing



113P643T
Arandela apoyo cubo
bronce porta-dados
Feed frame plate



006P244T
Eje tiralatas
Discharge shaft



007P644T
Eje soporte chapa
entrada envases
Feed table support pin



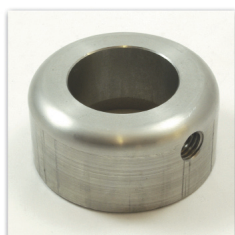
011P644T
Eje para piñón cubo
porta-dados
Feed turret shaft



004P245T
Tiralatas bronce
Discharge Lever
bronce



004P245T INOX
Tiralatas INOX
Discharge lever SS



001P253T
Anillo
Set collar



003P253T
Anillo para eje
Collar



006P253T
Anillo
Collar



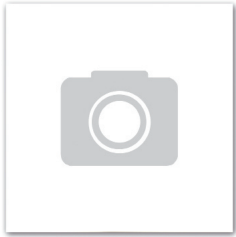
006P662T
Excéntrica cubo
bronce porta-dados
Feed eccentric



018P263AT
Dado
Feed arm slide



009P663T
Arandela cubre cubo
porta-dados
Feed arm washer



061P256T

Coraza alimentador tapas

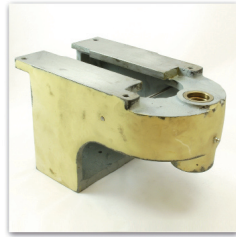
Cap feed guard



004P256T

Biela bronce alimentador tapas

Connecting link



022P281T

Soporte alimentador tapas

Cap feed support



011P240T

Muelle freno tapas
Cap feed brake spring



014P256T

Empujador de tapas
Center pusher



002P256T

Soporte reglas alimentador tapas Ø65 a Ø105

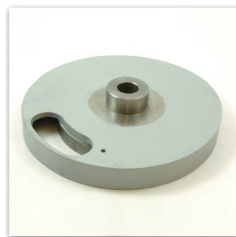
Cap feed slide 211 to 404



015P256T

Soporte reglas alimentador tapas Ø52

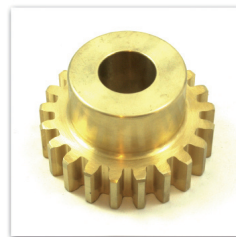
Cap feed slide 202



040P620T

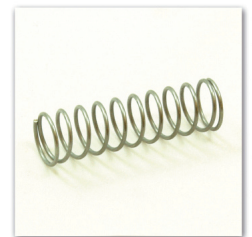
Leva uñas acompañamiento tapa

Cap pusher cam



035P223T

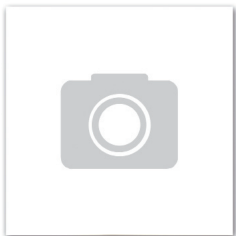
Piñón
Driven gear



009P640T

Muelle freno bronce alimentador tapas

Pressure shoe spring



007P443T

Mesa soporte guías de tapas

Cap guide disc



008P659T

Casquillo mesa
Collar



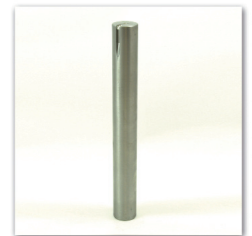
009P659T

Casquillo
Collar



023P244AT

Eje alimentacion tapas
Lower cap feed shaft



183P244T

Eje biela alimentador tapas

Lower cap feed shaft



003P253T

Anillo para eje
Collar



003P256T

Chapa soporte reglas alimentador tapas
Cap feed slide plate



007P256TCOM

Regla alimentador tapas + cuchilla ref. 089P256T
Parting knife blade + knife ref. 089P256T



008P256TCOM

Regla alimentador tapas + cuchilla ref. 088P256T
Parting knife blade + knife ref. 088P256T



005P256T

Biela alimentador tapas
Cap feed crank



010P256T

Casquillo
Spacing collar



011P256T

Varilla deposito
alimentador tapas
Cap magazine post



012P256T

Bulón alimentador
tapas
Bolt for slide



013P256T

Bulón alimentador
tapas
Bolt for crank



113P256T

Soporte freno tapas
Cap feed brake bracket



114P256T

Soporte freno tapas
Cap feed brake drum



115P256T

Soporte freno tapas
Cap feed brake shoe



116P256T

Bulón muelle freno
tapas
Cap feed brake spring
screw



001P628T

Tornillo freno bronce
alimentación
Screw



002P628T

Tornillo freno bronce
Screw



007P659TCOM

Freno bronce
alimentador tapas
MONTADO
Cap guide pressure
shoe COMPLETE



010P659TCOM

Freno bronce
alimentador tapas
MONTADO
Cap guide pressure
shoe COMPLETE



011P659TCOM

Freno bronce
alimentador tapas
MONTADO
Cap guide pressure
shoe COMPLETE



008P266AT

Uña gatillo disparo
tapas
NC NC Pawl



010P266T

Muelle gatillo disparo
tapas
Drive pawl spring



011P266T

Bulón gatillo disparo
tapas
Drive pawl pin



001P282T

Leva gatillo disparo
tapas
NC NC drive bushing



002P282AT

Soporte gatillo disparo
tapas
NC NC drive hub



004P282BT

Gatillo bronce disparo
tapas
NC NC trip knee



031P282T

Varilla gatillo bronce
disparo tapas
Pin NC NC trip knee



010P282T

Muelle gatillo bronce
disparo tapas

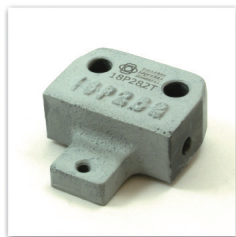
Spring for trip knee



013P282T

Bulón para rotula

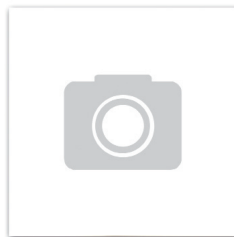
Clevis pin



018P282T

Soporte uña disparo
tapas

Trip knee bracket



017P682T

Varilla rotula disparo
tapas

NC NC trip knee
connecting rod



003P030T
Mangón de polea
Clutch sleeve



004P030T
Tuerca Embrague
Clutch collar



006P030T
Pivote embrague
Locking pin



007P030T
Arandela embrague
Clutch sleeve washer



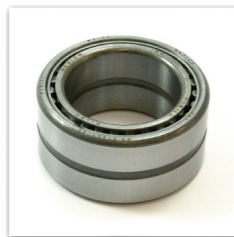
008P030T
Cono embrague
Clutch cone



038P030T
Muelle pivote
embrague
Clutch locking pin
spring



013P216T
Soporte freno tapas
Cap feed brake shoe



064P216T
Rodamiento
Roller bearing



035L617T
Grupilla
Retaining ring



009P917T
Grupilla
Retaining ring



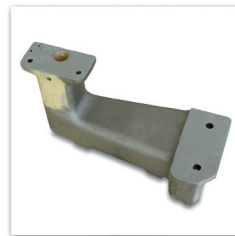
007P430T
Patillas embrague
Disc clutch finger



011L630T
Bola
Clutch handle ball



001P240T
Muelle expulsor
Knockout rod spring



009P443T
Soporte palanca
marcha
Starter bracket



005P444T
Eje palanca marcha
Starter shaft



004P246T
Palanca marcha
Starting lever



007P246T
Herradura embrague
Yoke for clutch cone



013P446T
Soporte ferodo freno
embrague
Brake lever



004P253T
Casquillo INOX
Plain collar SS



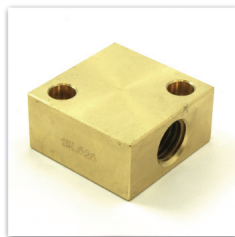
236L616T
Rueda soporte motor
Cap feed crank



001L617T
Grupilla
Retaining ring



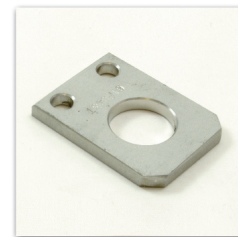
014L626T
Eje roscado soporte motor
Motor base screw



015L626T
Tuerca bronce soporte motor
Motor base screw block



221P443T
Base motor
ref. 031P443T
Motor base
ref. 031P443T



061P543T
Chapa guia soporte motor
Motor base screw support



012L643T
Guias base motor
Motor base guide



012L653T
Manilla
Crank handle



198L653T
Casquillo varilla tensor motor
Collar



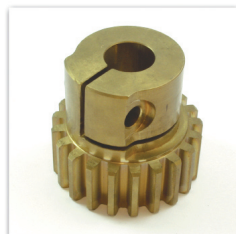
001P453T
Soporte puertas
Column door collar



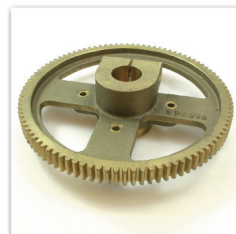
035P223T
Piñón
Driven gear



037P223T
Piñón
Intermediate pinion for timer



002P423T
Piñón
Timer drive pinion



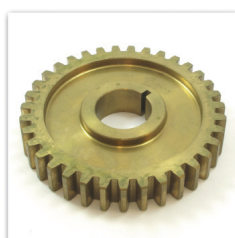
003P423T
Piñón
Timer drive gear



004P423T
Piñón
Timer disc drive gear



005P423T
Piñón
Timer disc intermediate gear



010P623T
Piñón
Timer intermediate gear



040P623T
Piñón disco entrada envases Ø99
Timer driven gear Ø401



041P623T
Piñón disco entrada envases Ø65-73
Timer driven gear Ø211-300



042P623T
Piñón disco entrada envases Ø52
Timer driven gear Ø202



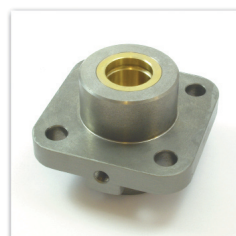
044P623T
Piñón
Timer idler gear



003P526T
Tornillo ajuste mesa
Adjusting screw



011P443T
Mesa apoyo envases INOX
Timer feed table SS



018P443T
Soporte eje con casquillo
Timer drive shaft bearing



019P443T
Soporte eje
Timer intermediate gear stud bearing



006P444T
Eje mesa entrada envases
Timer drive shaft



007P444T
Eje mesa entrada envases
Timer shaft



021P644T
Bulón disco entrada envases
Stud for timing gear



023P644T
Eje para piñón
Timer disc shaft



056P644T
Eje pie
Feed table elevator shaft



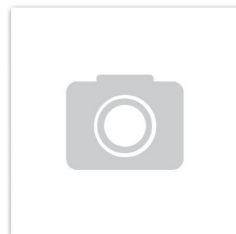
004P253T
Casquillo INOX
Plain collar SS



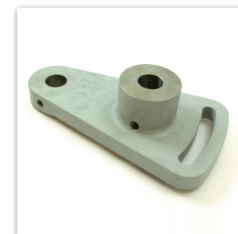
005P253T
Anillo
Collar



006P253T
Anillo
Collar



006P668T
Estrella entrada
envases
Feed star



062P669T
Guitarra mesa entrada
envases
Timer gear arm



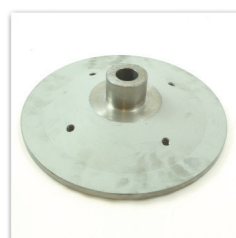
068P669T INOX
Guía entrada envases
INOX
Timer rail bracket SS



069P669T
Freno entrada envases
Tension rail



069P669T COM
Freno entrada envases
COMPLETO
Tension rail
COMPLETE



076P669T
Soporte disco entrada
envases
Timer disc hub



057P669T
Disco entrada envases
Timer disc cover



021P576T
Freno entrada envases
Tension rail



021P576T COM
Freno entrada envases
COMPLETO
Tension rail
COMPLETE



022P576T
Varilla patín entrada
envases
Tension rail pin



014P681T
Pie apoyo mesa
entrada envases
Feed table elevator
pedestal



015P681T
Tuerca bronce eje pie
entrada envases
Feed table elevator
shaft nut



001P482T
Soporte varilla disparo
tapas INOX
NC NC trip lever SS



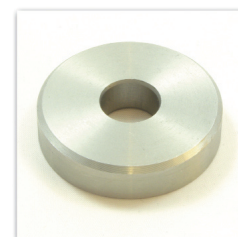
004P682T
Señal bronce disparo
tapas
NC NC feel lever



007P682T
Eje varilla disparo
tapas
NC NC trip lever shaft



005P290T
Muelle freno entrada
envases
Tension rail spring



078P290T
Arandela apoyo
Washer



043L853T
Anillo
Collar



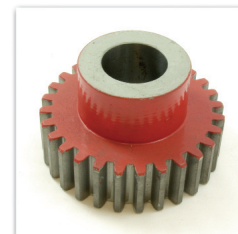
073P290T
Arandela INOX
Washer SS



019P216T
Arandela
Thrust washer



022P216T
Arandela apoyo
Thrust washer



034P523T
Piñón marcador
rotativo
Marker intermediate
driven gear



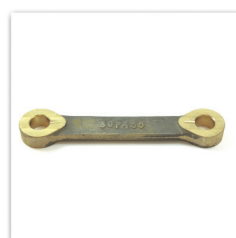
024P226T
Tornillo sujeción
piñón marcador
rotativo
Cap screw



005P253T
Anillo
Collar



009L653T
Casquillo
Cap feed set collar



039P456T
Biela bronce
alimentador tapas
marcador rotativo
Connecting link



040P456T
Regla alimentador
tapas marcador
rotativo
Parting knife LH



041P456T
Regla alimentador
tapas marcador
rotativo
Parting knife RH



044P456T
Empujador de tapas
Center pusher



004P331T
Bulon rueda cierre 1ª
operación
Smg roll pin 1st
operation



006P240T
Muelle
Cover stop spring



005P241T
Bulon rueda cierre 2ª
operación
Compression roll pin
2nd operation



007P241AT
Rodillo leva cierre
Cam roll



015P241T
Excéntrica palanca
cierre
Cam roll eccentric pin



017P241T
Varilla muelle cabezal
1ª operación
Clamping pin 1st
operation



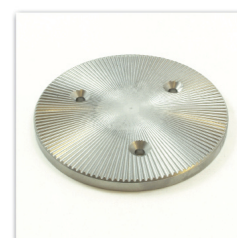
018P241T
Varilla muelle cabezal
2ª operación
Clamping pin 2nd
operation



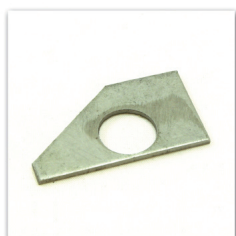
019P241T
Tope bronce
regulación rueda
cierre
Indicator



020P241T
Bulón fijación rueda
cierre
Clamping pin



015P357T
Platillo asiento envase
Lower chuck plate
cannery



018P357T
Uña fijación presión
Lower chuck lock key



016P259T
Uña arrastre tapa
Cap pusher



001P264T
Bulón uña arrastre
tapa
Cap pusher pin



002P264T
Bulón rueda uña
arrastre tapa
Cap pusher cam roll
pin



003P264T
Rueda uña arrastre
tapa
Cap pusher cam roll



023P185TCOM
Freno salida tapa
COMPLETO
Cap magazine cover
stop COMPLETE



003P615T

Aro tórico toma fuerza
O ring



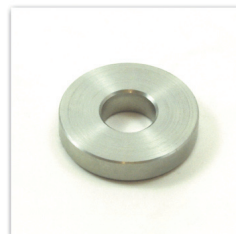
022P216T

Arandela apoyo
Thrust washer



004P253T

Casquillo INOX
Plain collar SS



073P290T

Arandela INOX
Washer SS



008P297T

Soporte fundido toma fuerza
Safety clutch sleeve



009P297T

Soporte fundido toma fuerza
Safety Clutch Housing



010P297T

Arandela templada toma fuerza
Ball retaining disc



011P297T

Arandela templada toma fuerza
Ball slip disc



012P297T

Tuerca bronce toma fuerza
Safety clutch locknut



013P297T

Corona dentada toma fuerza
Safety clutch sprocket



014P297T

Muelle toma fuerza
Safety clutch spring



035P297T

Bola toma fuerza 7/8"
Safety clutch ball 7/8"



036P297T

Arandela toma fuerza
Steel washer for safety clutch



019L617T
Grupilla
Retaining ring



010P624T
Piñón cadena toma
fuerza
Filler drive take-up
sprocket



002P626T
Eje piñón cadena toma
fuerza
Filler drive take-up
stud



001L617T

Grupilla

Retaining ring



055P620T

Leva uñas
acompañamiento tapa
vapor

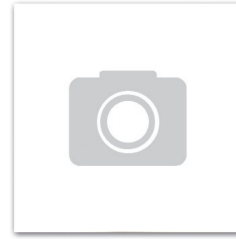
Steam vacuum cap
pusher cam



011P640T

Muelle brida
alimentación vapor

Steam vacuum feed
pocket spring



062P443T

Mesa guía tapas vapor

Steam vacuum cap
guide disc



063P443T

Chapa INOX mesa
guía tapas vapor

Cap guide disc SS



064P443T

Chapa INOX mesa
guía tapas vapor

Cap guide disc SS



011P682T
Bulón
Pin



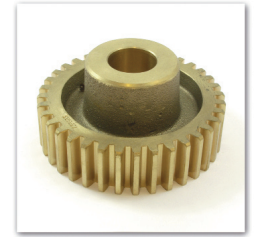
019P216T
Arandela
Thrust washer



003P526T
Tornillo ajuste
arrastrador
Adjusting screw



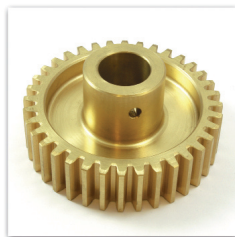
022P616T
Arandela
Feed chain idler gear
retaining washer



073P623T
Piñón porta-seguro
arrastrador
Feed chain gear



074P623T
Piñón cónico
movimiento
arrastrador
Feed chain drive
bevel pinion



075P623T
Piñón arrastrador
Feed chain drive gear



076P623T
Piñón arrastrador
Feed chain idler gear



079P623T
Piñón cónico
movimiento
arrastrador
Feed turret shaft bevel
gear



003P624T
Piñón INOX cadena
arrastre envases
Feed chain drive
sprocket SS



004P624T
Piñón arrastrador
Feed chain idler
sprocket



011P624T
Piñón arrastrador
Take-up sprocket



058P644T
Eje arrastrador
Feed chain drive shaft



001P653T
Casquillo
NC NC feel lever
collar



007P681T
Guitarra arrastrador
Feed chain idler gear
bracket



014P681T
Pie apoyo arrastrador
entrada envases
Feed table elevator
pedestal



015P681T
Tuerca bronce eje pie
entrada envases
Feed table elevator
shaft nut



005P682T
Soporte varilla disparo
tapas INOX
NC NC trip lever SS



024P741T
Casquillo bronce
piñón arrastrador
Bushing for idler
sprocket



013P724T
Brida para seguro
arrastrador
Conveyor drive hub



091P669T

Guía envases
izquierda INOX con
alojamiento señal tapa

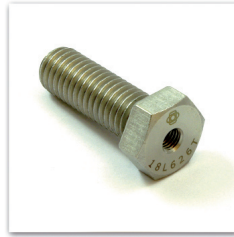
Inlet rail left SS



090P669T

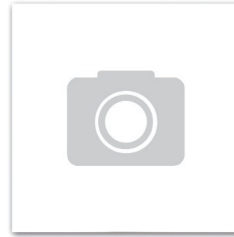
Guía envases derecha
INOX

Inlet rail right SS



018L626T

Tornillo
Screw



40P-062-23

Cadena arrastre
envases con 23 dedos
arrastre

Can feed chain with
23 dogs chain



014P682T

Biela varilla señal
tapas

NC NC connecting
rod trip lever