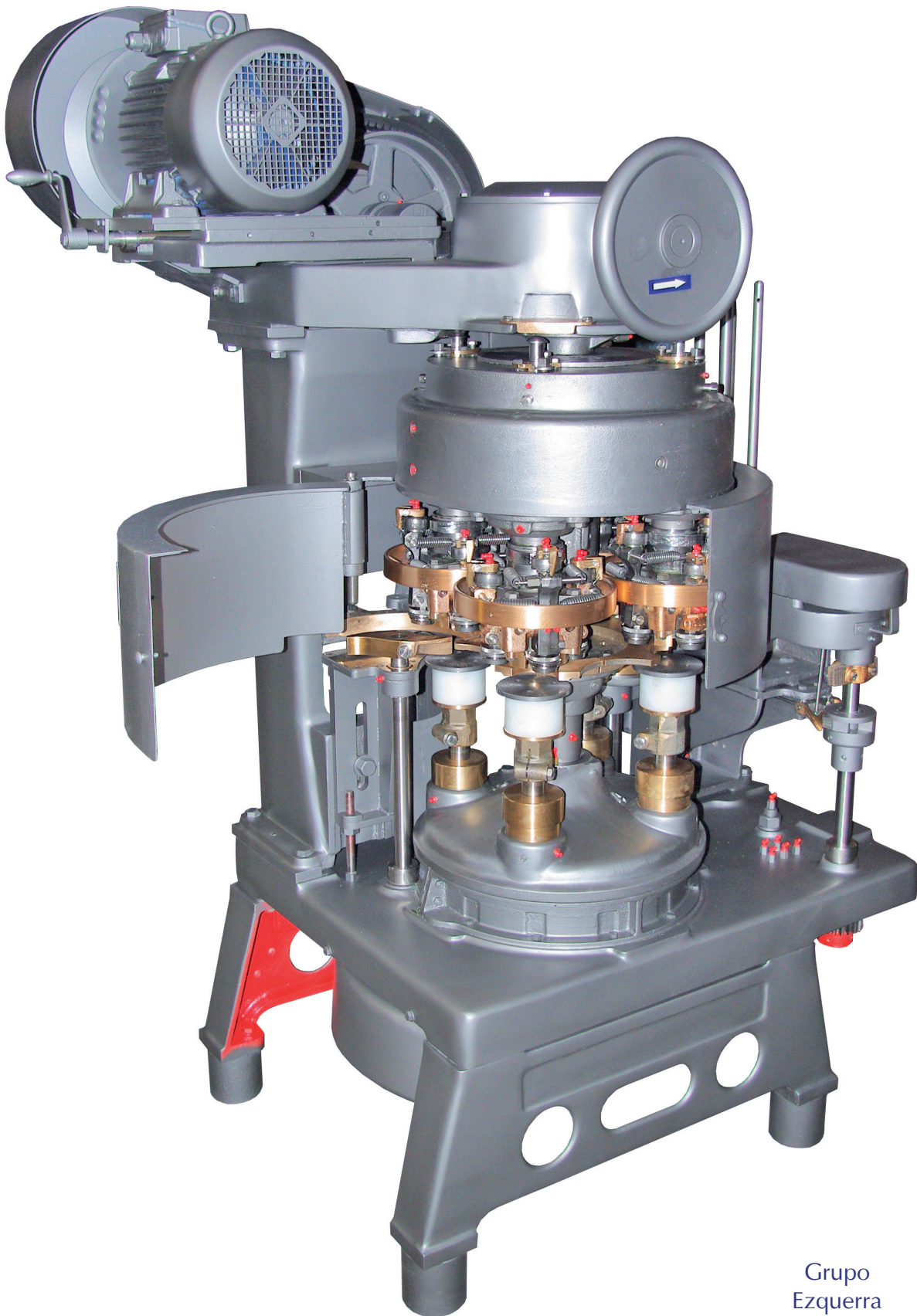


ANGELUS 29P

CATÁLOGO REPUESTO



Grupo
Ezquerra

Ezquerra
Industria Ezquerra Somme, s.l.

Somme[®]
SOMMETRADE, S.L.

COMERCIAL
Somme, s.l.

López Galicia
Cerradoras López Galicia, s.l.

Somme[®]
MAROC, S.A.R.L.

GRUPO	PÁGINA
29PB001	3
29PB002	4
29PB002-A	6
29PB003	8
29PB004	9
29PB005	10
29PB007	12
29PB008.01	14
29PC	15
29PD004	16
29PD006	17



029P243T
Pata cerradora
Leg



029P243T INOX
Pata cerradora
INOX 316
Leg SS 316



030P243T
Soporte salida
envases
Discharge table



009P254T
Tapas carter inferior
fundición
Lower chuck cam
guards casting



009P254TI
Tapas carter inferior
INOX 316
Lower chuck cam
guards SS 316



005P281T
Mesa soporte guías de
tapas
Cap guide disc



011P281T
Soporte alimentador
tapas
Cap feed support



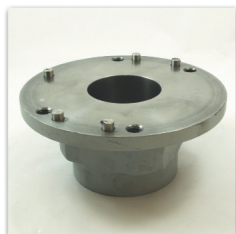
011P281T
Arandela inox apoyo
cubo portadados
Plate for feed frame



001P203CT

Soporte pistones inferior

Lower turret



001P208T

Soporte estrella central

Starwheel hub



008P206BT

Camisa bronce pistones

Lower turret bushings



016P228T

Pivote

Dowel pin



013P202T

Soporte rodamiento

Lower turret bearing retainer



004P206AT

Cacerola pistón

Lower chuck mandrel cup



006P206AT

Pistón bronce

Lower chuck slide



001P210T

Chaveta pistón

Key for lower chuck slide



014P216T

Arandela axial para piñón

Thrust washer



017P216T

Rodamiento axial

Ball bearing



038P216T

Chaveta cabezal

Key for lower turret gear



022P220T

Contraleva pistones

Lower chuck guide cam



053P220T

Contraleva pistones

Lower chuck guide cam



064P220T

Leva pistones

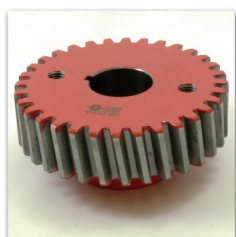
Lower chuck cam



032P220T

Chapa inox leva pistones

Lower chuck cam Plate



045P223BT

Piñón

Center lower drive gear



048P223BT

Piñón

Intermediate gear



075P223T

Piñón

Intermediate gear pinion



107P223T

Piñón

Turret gear



001P227CT

Eje pistón

Lower chuck mandrel



022P228T
Varilla pistón
Spring adjusting pin



023P228T
Pasador pistón
Locking pin



024P228T
Tope pistón
Lower chuck spacer



003P229AT
Rueda pistón
Cam roll for lower
chuck



008P229BT
Bulón pistón
Cam roll pin



008P229BRT
Bulón pistón
Cam roll pin



004P240T
Muelle presión pistón
Lower chuck spring



001P254T
Espiga allen pistón
Hex. socket set screw



016P264T
Eje para piñón
Intermediate gear stud



073P290T
Arandela
Washer for
intermediate gear stud



044P216T
Llave para pistón
Lower chuck nut
wrench



045P216T
Llave para pistón
Lower chuck spring
adjusting wrench



013P216T
Arandela apoyo
Thrust washer



015P220T
Muelle patín expulsor
Spring for cap
centering cam



039P220T
Patín expulsor
Cap centering cam



073P223T
Piñón
D.S. center gear



089P223DT
Piñón
D.S. head drive gear



090P223T
Piñón levas cierre
D.S. cam drive gear



009P228AT
Cabeza expulsora
Knockout rod end



016P228T
Pivote
Dowel pin



019P228T
Bulon patín expulsor
Stud for cap centering
cam



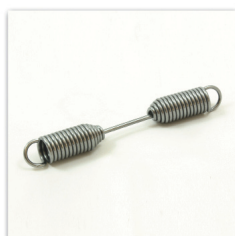
020P228T
Bulón regulación
placa cierre
D.S. spindle adjusting
screw



001P240T
Muelle expulsor
Knock rod spring



001P241BT
Caña soporte
cabezales
D.S. head sleeve



021P241BT
Muelle palanca cierre
Head spring



022P241T
Tornillo sujección leva
cierre
Set screw for D.S. cam



030P241AT
Casquillo para eje
placa cierre
Upper turret adjusting
sleeve



010P243T
Leva expulsor salida
envases
Knockout cam



004P244CT
Eje placa de cierre
Upper chuck spindle



005P244BT
Varilla expulsora con
cabeza expulsora
Knockout rod /
knockout rod end



049P244T
Seta expulsora
Knockout plate



049P244RT
Seta expulsora
Knockout plate



002P247T

Chaveta

Key for D.S. head cam gear



003P247T

Chaveta

Key for D.S. head gear



017V241AT

Rodamiento

Ball Bearing



018V241AT

Rodamiento

Ball Bearing



017P220T

Leva cierre

Seaming cam



011P223T
Piñón
Turret gear



013P223BT
Moyu bronce para
piñón
Feed turret gear hub



070P223T
Piñón cubo bronce
portadados
Feed arm driven gear



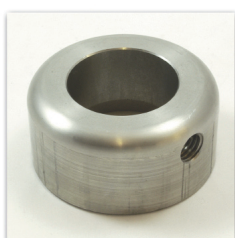
071P223T
Cubo bronce
portadados
Feed arm internal gear



023P226T
Tornillo eje bridas
Cap screw for feed
turret shaft



016P228T
Pivote
Dowel Pin



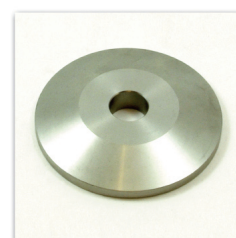
001P253T
Anillo
Feed turret shaft collar



017P262T
Excéntrica cubo
bronce portadados
Feed arm eccentric



018P262T
Arandela cubo bronce
portadados
Internal gear liner



016P263T
Arandela
Feed turret washer



018P263AT
Dado
Feed arm slide



011P644T
Eje piñón cubo
portadados
Feed turret shaft



011-015P263T
Excéntricas bronce
Eccentric bronze



003P030T
Mangón de polea
Sleeve



004P030T
Tuerca de embrague
Collar



007P430T
Patilla de embrague
Clutch finger



006P030T
Pivote embrague
Locking pin



007P030T
Arandela embrague
Washer



008P030T
Cono embrague
Clutch cone



013P216T
Arandela apoyo
Thrust washer



001P240T
Muelle embrague
Clutch pressure spring



018P244T
Eje palanca marcha
Shaft starter



050P244T
Eje volante
Main drive shaft



013P246T
Soporte ferodo freno
embrague
Clutch brake



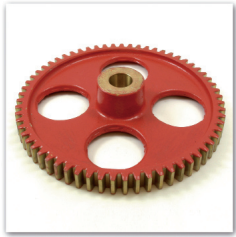
004P246T
Palanca marcha
Starter lever



007P246T
Herradura de
embrague
Yoke for clutch cone



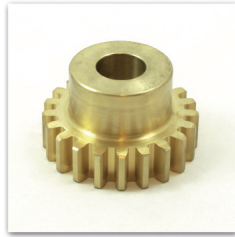
001P953T
Volante
Handwheel



034P223T

Piñón

Intermediate cap feed gear



035P223T

Piñón

Cap feed gear



023P244AT

Eje alimentador tapas

Lower cap feed shaft



024P244AT

Eje alimentador tapas

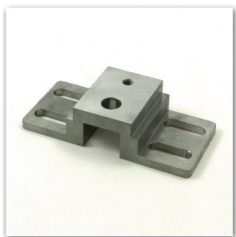
Upper cap feed shaft



003P253T

Anillo para eje

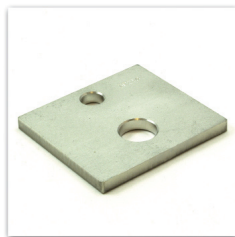
Collar for cap feed shaft



002P256T

Soporte reglas alim. tapas Ø65-100

Cap feed slide Ø211-401



003P256T

Chapa soporte reglas alimentación tapas

Cap feed slide plate



004P256T

Biela bronce alimentador tapas

Connecting link



005P256T

Biela alimentador tapas

Cap feed crank



010P256T

Casquillo

Spacing collar for center pusher



011P256T

Varilla depósito alimentador tapas

Cap magazine post



012P256T

Bulón alimentador tapas

Bolt for cap feed slide



013P256T

Bulón alimentador tapas

Bolt for cap feed crank



014P256T

Empujador tapas

Center pusher



009P259AT

Leva uñas acompañamiento tapa

Cap pusher cam



009P264T

Eje

Gear stud



008P266AT

Uña gatillo disparo tapas

Cap feed drive pawl



010P266T

Muelle gatillo disparo tapas

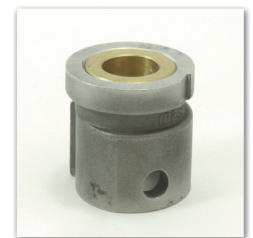
Drive pawl spring



011P266T

Bulón gatillo disparo tapas

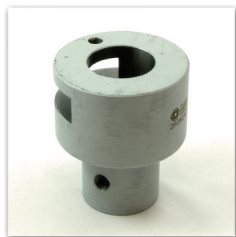
Drive pawl pin



001P282T

Leva gatillo disparo tapas

NC NC drive bushing



002P282AT

Soporte gatillo disparo tapas

NC NC drive hub



004P282BT

Gatillo bronce disparo tapas

Trip knee



007P282AT

Varilla señal tapas

Trip lever shaft



010P282T

Muelle gatillo bronce disparo tapas

Spring for trip knee



013P282T

Bulón para rótula

Clevis pin



015P282T

Señal disparo tapas bronce

NC NC trip feel lever



018P282T

Soporte uña disparo tapas

NC NC trip knee bracket



005P682T

Soporte varilla disparo tapas INOX

NC NC trip lever SS



007P256T COM

Regla alimentación tapas COMPLETA

LH parting knife blade
LH COMPLETE



008P256T COM

Regla alimentación tapas COMPLETA

LH parting knife blade
RH COMPLETE



009P282AT

Varilla soporte señal corta

Trip lever shaft



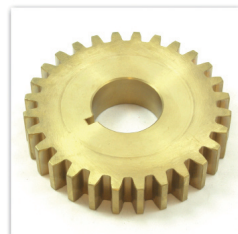
023P223T
Piñón
Timer drive gear



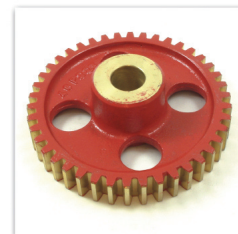
035P223T
Piñón
Can feed gear



037P223T
Piñón
Intermediate pinion gear



038P223T
Piñón
Intermediate gear for timer



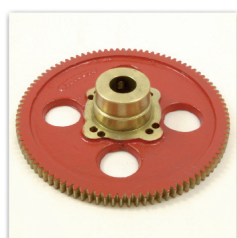
046P223T
Piñón salida
Discharge gear



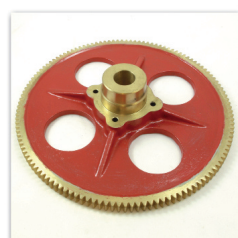
060P223AT
Piñón
Aux. timer driven gear



061P223AT
Piñón
Aux. timer driven gear



062P223AT
Piñón
Aux. timer driven gear



063P223AT
Piñón
Aux. timer driven gear



015P228T
Tornillo tiralatas
Discharge lever clamping pin



020P244T
Eje
Timer shaft



004P245T
Tiralatas
Discharge Lever



004P245T INOX
Tiralatas INOX
Discharge lever SS



052P267T
Estrella puntas entrada envases INOX
Timer starwhell SS



013P276T
Tornillo
Clamping bolt



010P281BT
Mesa entrada envases
Feed table bracket



019P282T
Bulón
NC NC shaft bracket



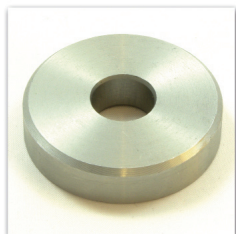
005P290T
Muelle freno entrada envases
Tension rail spring



013P290BT COM
Disco entrada envases COMPLETO
Timer disc COMPLETE



074P290AT
Eje disco entrada envases
Aux. timer star shaft



078P290T

Arandela apoyo
Timer star washer



104P290TI

Soporte frenos entrada
envases INOX
Timer rail bracket SS



105P290T

Freno entrada envases
Tension rail gear



105P290T COM

Freno entrada envases
COMPLETO
Tension rail
COMPLETE



022P243T

Tapa cárter superior
Top plate cover



044P243T

Tapa expulsos INOX
Cover for DS
spindle SS



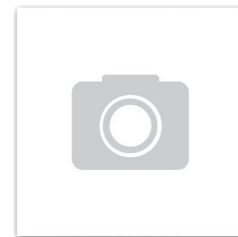
124P244AT

Bulón puerta móvil
Head guard & timing
pin



010P254AT

Puerta móvil
DS head guard door



011P254AT

Soporte puerta móvil
DS head guard bracket



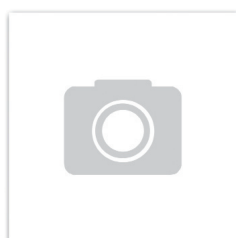
012P254BT

Puerta fija
Main head guard



014P254AT

Coraza cobre piñón
Intermediate gear
guard



014P554T

Soporte puerta
Bracket for DS head
guard door



010P259AT

Tapa aceite para leva
uñas acomp. tapa
Cap pusher cam cover



004P331T

Bulón rueda cierre 1ª
operaciónSmg roll pin 1st
operation

006P240T

Muelle

Cover stop spring



005P241T

Bulón rueda cierre 2ª
operaciónHead guard & timing
pin

007P241AT

Rodillo leva cierre

Cam roll



015P241T

Excéntrica palanca
cierre

Cam roll eccentric pin



017P241T

Varilla muelle cabezal
1ª operaciónClamping pin 1st
operation

018P241T

Varilla muelle cabezal
2ª operaciónClamping pin 2nd
operation

019P241T

Tope bronce
regulación rueda
cierre

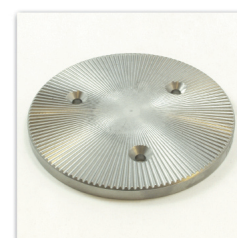
Indicator



020P241T

Bulón fijación rueda
cierre

Clamping pin



015P357T

Platillo asiento envase

Lower chuck plate
cannery

018P357T

Uña fijación presión
Lower chuck lock key

016P259T

Uña arrastre tapa
Cap pusher

001P264T

Bulón uña arrastre
tapa

Cap pusher pin



002P264T

Bulón rueda uña
arrastre tapaCap pusher cam roll
pin

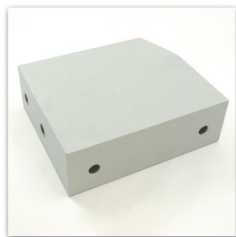
003P264T

Rueda uña arrastre
tapa

Cap pusher cam roll



005P253T
Anillo
Collar



059P298T
Soporte palanca
marcha
Topper support
bracket



012P698T
Soporte palanca
marcha
Clutch starting bracket



017P346T
Rodillo
Cam roll



004P253T
Casquillo INOX
Plain collar SS



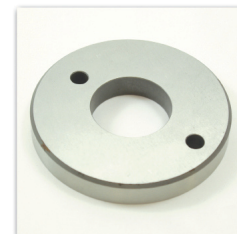
008P297T
Soporte fundido toma fuerza
Safety clutch sleeve



009P297T
Soporte fundido toma fuerza
Safety Clutch Housing



010P297T
Arandela templada toma fuerza
Ball retaining disc



011P297T
Arandela templada toma fuerza
Ball slip disc



012P297T
Tuerca bronce toma fuerza
Safety clutch locknut



013P297T
Corona dentada toma fuerza
Safety clutch sprocket



014P297T
Muelle toma fuerza
Safety clutch spring



035P297T
Bola toma fuerza 7/8
Safety clutch ball 7/8



036P297T
Arandela toma fuerza
Steel washer for safety clutch



006P297T
Piñon cónico con ref.
008P597T
Miter gear w/ ref
008P597T